

REFERENCE LIST COMPONENTS

The component improvements are calculated enhancements for a selection of available tested build-ups.

The tested build-ups are:

- **For the most part available in the online component catalogue**
- **Partially filed with KLH internal test reports**
- **Partially matched with dataholz build-ups**

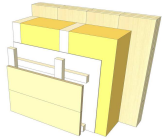
All entries available online are noted in this list, all KLH internal measurements and reports named to allow quick data verification.

Status of references is 13.07.2023

AW

Ventilated timber facade

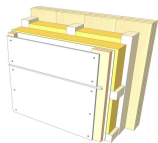
AW 01



AW 01 S	AW12.01	https://www.klh.at/wp-content/uploads/2019/12/aw1201-en.pdf
	dataholz	https://www.dataholz.eu/en/components/external-wall/detail/kz/awmoho05a.htm
AW 01 G	AW13.04	https://www.klh.at/wp-content/uploads/2019/12/aw1304-en.pdf
	dataholz	https://www.dataholz.eu/en/components/external-wall/detail/kz/awmoho05a.htm
AW 01 FS	AW13.02	https://www.klh.at/wp-content/uploads/2019/12/aw1201-en.pdf
AW 01 VS	dataholz	https://www.dataholz.eu/en/components/external-wall/detail/kz/awmghi03a.htm
AW 01 VS2	dataholz	https://www.dataholz.eu/en/components/external-wall/detail/kz/awmghi03b.htm

Ventilated facade panel

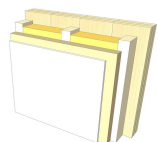
AW 02



AW 02 S	AW14.05	https://www.klh.at/wp-content/uploads/2019/12/aw1405-en.pdf
AW 02 G		
AW 02 FS		
AW 02 VS		
AW 02 VS2		

Plaster baseboard

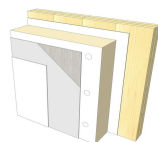
AW 03



AW 03 S	AW18.03	https://www.klh.at/wp-content/uploads/2019/12/aw1803-en.pdf
AW 03 G		
AW 03 FS		
AW 03 VS		
AW 03 VS2		

ETICS - EPS

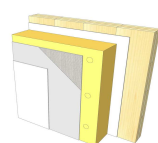
AW 04



AW 04 S	KLH intern	Messprotokoll WAA 2013 WDVS
AW 04 G		
AW 04 FS	AW10.04	https://www.klh.at/wp-content/uploads/2019/12/aw1004-en.pdf
AW 04 VS	AW12.05	https://www.klh.at/wp-content/uploads/2019/12/aw1205-en.pdf
AW 04 VS2		

ETICS - Mineral wool

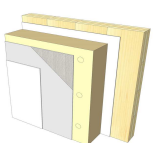
AW 05



AW 05 S	KLH intern	Messprotokoll WAA 2013 WDVS
AW 05 G		
AW 05 FS		
AW 05 VS	AW15.01	https://www.klh.at/wp-content/uploads/2019/12/aw1501-en.pdf
AW 05 VS2		

ETICS - Wood fiber

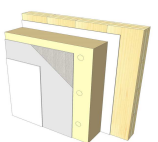
AW 06



AW 06 S	dataholz	https://www.dataholz.eu/en/components/external-wall/version/kz/awmopo01a/nr/5.htm
AW 06 G	dataholz	https://www.dataholz.eu/en/components/external-wall/version/kz/awmopo01a/nr/7.htm
AW 06 FS	AW14.07	https://www.klh.at/wp-content/uploads/2019/12/aw1407a-en.pdf
AW 06 VS		
AW 06 VS2		

ETICS - Hemp

AW 07



AW 07 S	AW14.01	https://www.klh.at/wp-content/uploads/2019/12/aw1401-en.pdf
AW 07 G	AW14.02	https://www.klh.at/wp-content/uploads/2019/12/aw1402-en.pdf
AW 07 FS		
AW 07 VS		
AW 07 VS2	AW14.04	https://www.klh.at/wp-content/uploads/2019/12/aw1404-en.pdf

IW

KLH 3s 60

IW 01



IW 01 S	KLH18.01	https://www.klh.at/wp-content/uploads/2019/12/klh1801-en.pdf
IW 01 G		
IW 01 FS		
IW 01 VS		
IW 01 VS2		

KLH 3s 100

IW 02



IW 02 S	KLH12.02	https://www.klh.at/wp-content/uploads/2019/12/klh1202-en.pdf
IW 02 G		
IW 02 FS	IW18.02	https://www.klh.at/wp-content/uploads/2019/12/iw1801-en.pdf
IW 02 VS		
IW 02 VS2		

KLH 5s 160

IW 03



IW 03 S	KLH12.04	https://www.klh.at/wp-content/uploads/2019/12/klh1204-en.pdf
IW 03 G		
IW 03 FS		
IW 03 VS		
IW 03 VS2		

Cladded

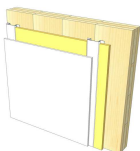
IW 04



IW 04 S	IW12.07	https://www.klh.at/wp-content/uploads/2019/12/iw1207-en.pdf
IW 04 G		
IW 04 FS	IW18.02	https://www.klh.at/wp-content/uploads/2019/12/iw1801-en.pdf
IW 04 VS		
IW 04 VS2		

Resilient profile

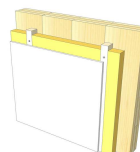
IW 05



IW 05 S	IW18.02	https://www.klh.at/wp-content/uploads/2019/12/iw1801-en.pdf
IW 05 G		
IW 05 FS		
IW 05 VS		
IW 05 VS2		

Facing formwork timber battens

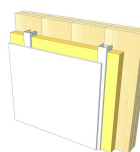
IW 06



IW 06 S	KLH intern	Messprotokoll WAA 2022 Holzlattung dataholz https://www.dataholz.eu/en/components/internal-wall/version/kz/iwmxo02a.htm
IW 06 G		
IW 06 FS		
IW 06 VS		
IW 06 VS2		

Facing formwork CW-profiles

IW 07

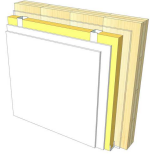


IW 07 S	IW15.01	https://www.klh.at/wp-content/uploads/2019/12/iw1501-en.pdf
IW 07 G		
IW 07 FS	KLH intern	Messprotokoll WAA 2022 Federschiene
IW 07 VS	IW14.02	https://www.klh.at/wp-content/uploads/2019/12/iw1402-en.pdf
IW 07 VS2		

IW

Facing formwork self supporting

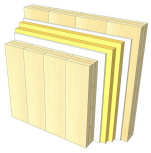
IW 08



IW 08 S	IW12.02	https://www.klh.at/wp-content/uploads/2019/12/iw1202-en.pdf
IW 08 G		
IW 08 FS	KLH intern	Messprotokoll WAA 2022 Federschiene
IW 08 VS		
IW 08 VS2	IW12.06	https://www.klh.at/wp-content/uploads/2019/12/iw1206-en.pdf

Two layer KLH 3s 100

IW 09

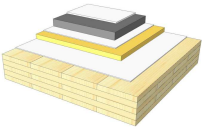


IW 09 S	WTW16.02	https://www.klh.at/wp-content/uploads/2019/12/wtw1602-en.pdf
	WTW05.01	https://www.klh.at/wp-content/uploads/2019/12/wtw0501-en.pdf
IW 09 G	WTW16.03	https://www.klh.at/wp-content/uploads/2019/12/wtw1603-en.pdf
IW 09 FS	WTW16.06	https://www.klh.at/wp-content/uploads/2019/12/wtw1606-en.pdf
IW 09 VS		
IW 09 VS2	WTW12.05	https://www.klh.at/wp-content/uploads/2019/12/wtw1205-en.pdf

GD

Wet screed / no or light fill

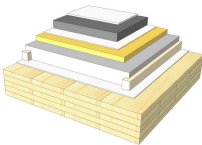
GD 01



GD 01 S	KLH intern	Messprotokoll WAA Kontrolldecke
GD 01 G		
GD 01 FS		
GD 01 UD	GD07.01	https://www.klh.at/wp-content/uploads/2019/12/gd0701-en.pdf
	GD14.09	https://www.klh.at/wp-content/uploads/2019/12/gd1409-en.pdf
GD 01 UD2	GD14.08	https://www.klh.at/wp-content/uploads/2019/12/gd1408-en.pdf

Wet screed / heavy fill (loose or inserts)

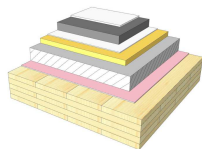
GD 02



GD 02 S	GD06.02	https://www.klh.at/wp-content/uploads/2019/12/gd0602-en.pdf
	GD08.03	https://www.klh.at/wp-content/uploads/2019/12/gd0803-en.pdf
GD 02 G		
GD 02 FS		
GD 02 UD	GD06.03	https://www.klh.at/wp-content/uploads/2019/12/gd0603-en.pdf
	KLH intern	IBTS Prüfbericht 2021
GD 02 UD2	GD08.02	https://www.klh.at/wp-content/uploads/2019/12/gd0802-en.pdf

Wet screed / bonded heavy fill (elastic or acoustic layer)

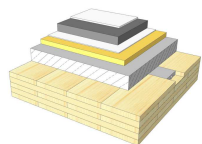
GD 03



GD 03 S	GD06.01	https://www.klh.at/wp-content/uploads/2019/12/gd0601-en.pdf
	GD15.02	https://www.klh.at/wp-content/uploads/2019/12/gd1502-en.pdf
	GD18.02	https://www.klh.at/wp-content/uploads/2019/12/gd1802-en.pdf
GD 03 G		
GD 03 FS		
GD 03 UD	GD15.01	https://www.klh.at/wp-content/uploads/2019/12/gd1501-en.pdf
	GD18.01	https://www.klh.at/wp-content/uploads/2019/12/gd1801-en.pdf
GD 03 UD2		

Wet screed / TCC / no fill

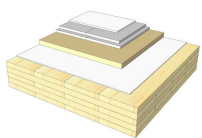
GD 04



GD 04 S	KLH intern	Messprotokoll WAA 2021 HBV
GD 04 G		
GD 04 FS		
GD 04 UD		
GD 04 UD2		

Dry screed / no or light fill

GD 05

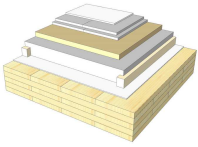


GD 05 S	Bericht	MA Kersten Johann
GD 05 G		
GD 05 FS		
GD 05 UD	GD14.07	https://www.klh.at/wp-content/uploads/2019/12/gd1407-en.pdf
	dataholz	https://www.dataholz.eu/en/components/intermediate-floor/version/kz/gdmtxa01a/nr/2.htm
GD 05 UD2	GD14.06	https://www.klh.at/wp-content/uploads/2019/12/gd1406-en.pdf
	dataholz	https://www.dataholz.eu/en/components/intermediate-floor/version/kz/gdmtxa01b/nr/3.htm

GD

Dry screed / heavy fill (loose or inserts)

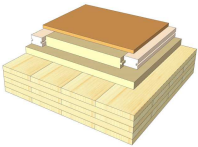
GD 06



GD 06 S	Bericht	HFA Messreihe 2008 (Prüfbericht_2151/2008/1-BG)
	dataholz	https://www.dataholz.eu/en/components/intermediate-floor/version/kz/gdmtx01.htm
GD 06 G		
GD 06 FS		
GD 06 UD		
GD 06 UD2	GD08.01	https://www.klh.at/wp-content/uploads/2019/12/gd0801-en.pdf
	dataholz	https://www.dataholz.eu/en/components/intermediate-floor/version/kz/tdmtxa01b/nr/2.htm

Wood planks / wood fiber system

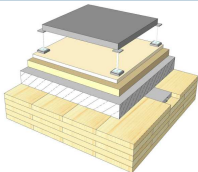
GD 07



GD 07 S	GD14.04	https://www.klh.at/wp-content/uploads/2019/12/gd1404-en.pdf
GD 07 G		
GD 07 FS		
GD 07 UD		
GD 07 UD2	GD14.05	https://www.klh.at/wp-content/uploads/2019/12/gd1405-en.pdf

Double floor / TCC

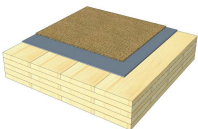
GD 08



GD 08 S	KLH intern	Messprotokoll WAA 2015/2021 Doppelboden
GD 08 G		
GD 08 FS		
GD 08 UD		
GD 08 UD2		

Carpet floor

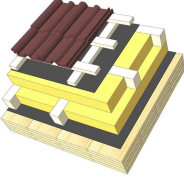
GD 09



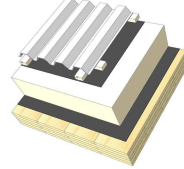
GD 09 S	Bericht	2018 / Verbesserung Trittschalldämmung / P. Brandstätter, Fraunhofer IBP
GD 09 G		
GD 09 FS		
GD 09 UD		
GD 09 UD2		

DA

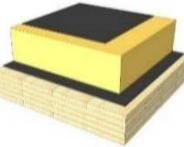
Steep roof / tiles

DA 01		DA 01 S	STD12.02	https://www.klh.at/wp-content/uploads/2019/12/std1202-en.pdf
			STD12.03	https://www.klh.at/wp-content/uploads/2019/12/std1203-en.pdf
		DA 01 G		
		DA 01 FS		
		DA 01 UD		
		DA 01 UD2	STD12.05	https://www.klh.at/wp-content/uploads/2019/12/std1205-en.pdf

Steep roof / metal sheet

DA 02		DA 02 S	STD12.01	https://www.klh.at/wp-content/uploads/2019/12/std1201-en.pdf
		DA 02 G		
		DA 02 FS		
		DA 02 UD		
		DA 02 UD2	STD12.06	https://www.klh.at/wp-content/uploads/2019/12/std1206-en.pdf

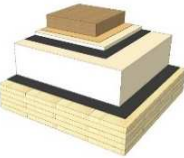
Flat roof / mineral wool (or wood fiber)

DA 03		DA 03 S	FD01.01	https://www.klh.at/wp-content/uploads/2019/12/fd0101-en-1.pdf
			dataholz	https://www.dataholz.eu/en/components/flat-roof/version/kz/fdmnko01/nr/2.htm
		DA 03 G		
		DA 03 FS		
		DA 03 UD		
		DA 03 UD2		

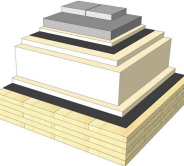
Flat roof / EPS

DA 04		DA 04 S	KLH intern	Messprotokoll WAA 2017 Dachterrasse
		DA 04 G		
		DA 04 FS		
		DA 04 UD	dataholz	https://www.dataholz.eu/en/components/flat-roof/version/kz/fdmbi01a/nr/1.htm
		DA 04 UD2	FD15.01	https://www.klh.at/wp-content/uploads/2019/12/fd1501-en.pdf
			KLH intern	Messprotokoll WAA 2017 Dachterrasse

Flat roof / greening

DA 05		DA 05 S	FD09.01	https://www.klh.at/wp-content/uploads/2019/12/fd0901-en.pdf
			dataholz	https://www.dataholz.eu/en/components/flat-roof/version/kz/fdmnko01.htm
		DA 05 G		
		DA 05 FS		
		DA 05 UD		
		DA 05 UD2		

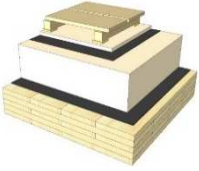
Flat roof / concrete blocks

DA 06		DA 06 S	DT14.02	https://www.klh.at/wp-content/uploads/2019/12/dt1402-en.pdf
		DA 06 G		
		DA 06 FS	DT14.01	https://www.klh.at/wp-content/uploads/2019/12/dt1401-en.pdf
		DA 06 UD		
		DA 06 UD2		

DA

Flat roof / wood terrace

DA 07



DA 07 S	KLH intern	Messprotokoll WAA 2017 Dachterrasse
DA 07 G		
DA 07 FS		
DA 07 UD	dataholz	https://www.dataholz.eu/en/components/flat-roof/version/kz/fdmnti01a/nr/1.htm
DA 07 UD2	KLH intern	Messprotokoll WAA 2015 Dachterrasse