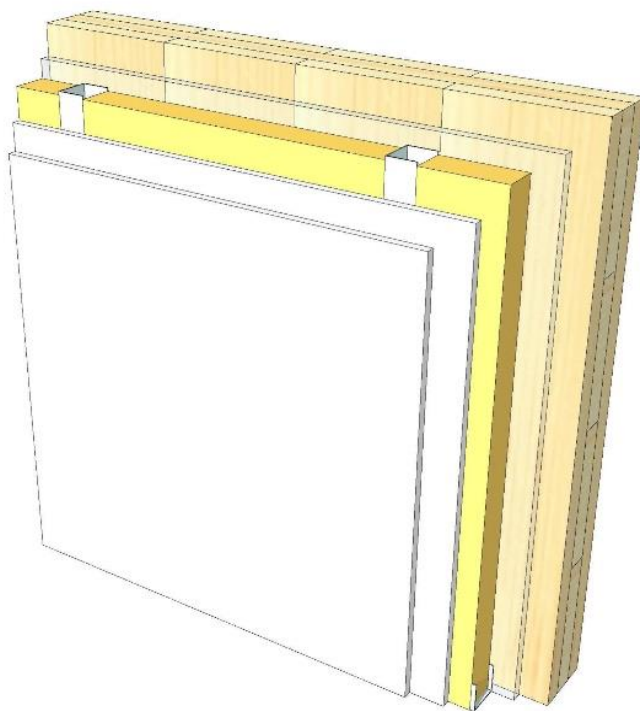
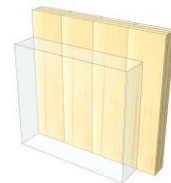


IW 08

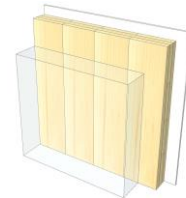
Facing formwork self supporting



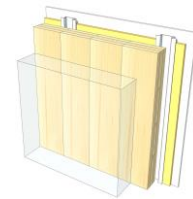
KLH® Visible



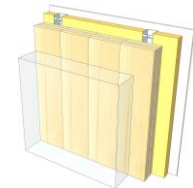
+ G



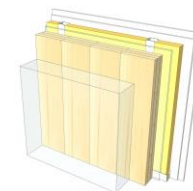
+ RP



+ FF



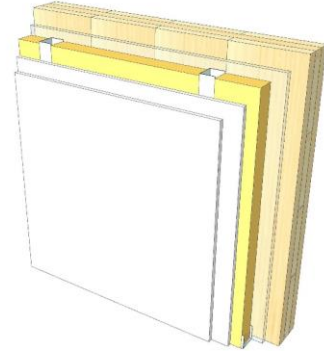
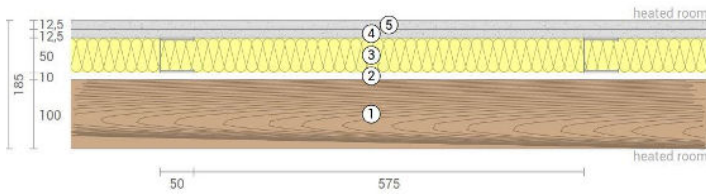
+ FF free / 2*G



	KLH® Visible	+ G	+ RP	+ FF	+ FF free / 2*G
Sound R_w [dB]	60	61	63	64	70
Thermal U [W/m ² K]	0,43	0,42	0,35	0,29	0,28
Fire R^*EI [min]	30	60	60	90	90
Thickness [mm]	185	198	225	260	270
Ecology [kg CO ₂ eq./m ²]	-58	-55	-50	-46	-48

IW 08 V

Interior wall / Self-supporting formwork
both-sided



No	mm	Material
1	100	KLH® - CLT
2	10	Air gap
3	50	CW-profile self supporting, rock wool
4	12,5	Gt-F board
5	12,5	Gt-F board

R*EI (fire attack on both sides)
30 minutes

U-Value
0,43 W/(m²K)

Rw
60 (-2;-8) dB

Thickness
185 mm
Mass per squaremeter
69 kg/m²

Global warming potential
-58 kg CO ₂ eq./m²
Primary energy (n. renewable)
77 kWh/m²

Link Ubakus
[IW 08 V Ubakus](#)

Link pre-dimensioning fire
[KLH REI 30](#)

Fire protection
R*EI
30

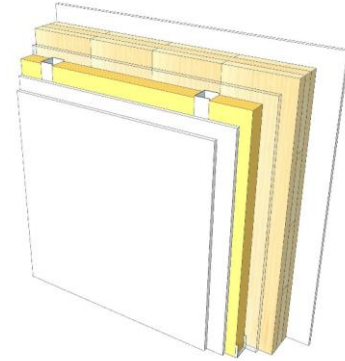
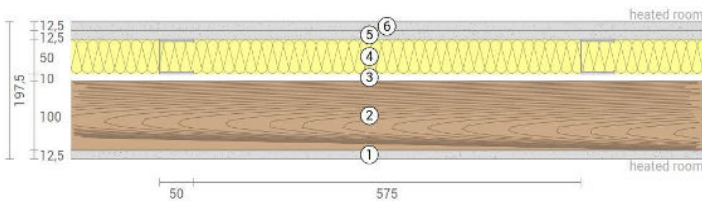
Thermal protection
W/(m²K)
0,43

Sound insulation
dB
60

Ecology
kg CO₂eq./m²
-58

IW 08 G

Interior wall / Self-supporting formwork
Cladded



No	mm	Material
1	12,5	Gt-F board
2	100	KLH® - CLT
3	10	Air gap
4	50	CW-profile self supporting, rock wool
5	12,5	Gt-F board
6	12,5	Gt-F board

R*EI (fire attack on both sides)	60 minutes
----------------------------------	-------------------

U-Value	0,42 W/(m²K)
---------	---------------------

Rw	61 (-2;-8) dB
----	----------------------

Thickness	198 mm
Mass per squaremeter	79 kg/m²

Global warming potential	-55 kg CO ₂ eq./m²
Primary energy (n. renewable)	87 kWh/m²

Link Ubakus
[IW 08 G Ubakus](#)

Link pre-dimensioning fire
[KLH REI 60](#)

Fire protection
R*EI
60

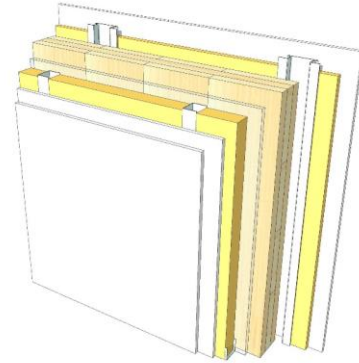
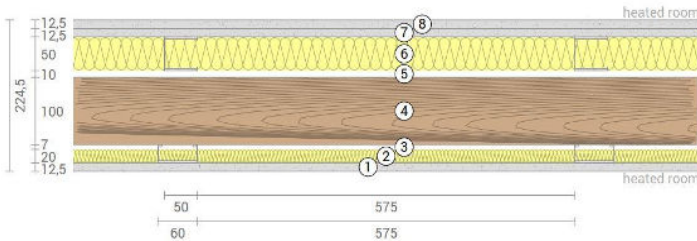
Thermal protection
W/(m²K)
0,42

Sound insulation
dB
61

Ecology
kg CO₂eq./m²
-55

IW 08 RP

Interior wall / Self-supporting formwork
Resilient profile



No	mm	Material
1	12,5	Gt-F board
2	20	Mineral wool
3	27	Resilient profile
4	100	KLH® - CLT
5	10	Air gap
6	50	CW-profile self supporting, rock wool
7	12,5	Gt-F board
8	12,5	Gt-F board

R*EI (fire attack on both sides)
60 minutes

U-Value
0,35 W/(m²K)

Rw
63 (-4;-10) dB

Thickness	225 mm
Mass per squaremeter	81 kg/m²

Global warming potential	-50 kg CO ₂ eq./m²
Primary energy (n. renewable)	104 kWh/m²

Link Ubakus
[IW 08 RP Ubakus](#)

Link pre-dimensioning fire
[KLH REI 60](#)

Fire protection
R*EI
60

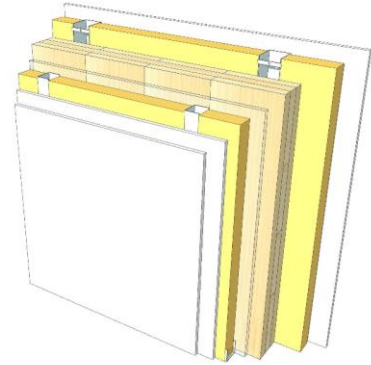
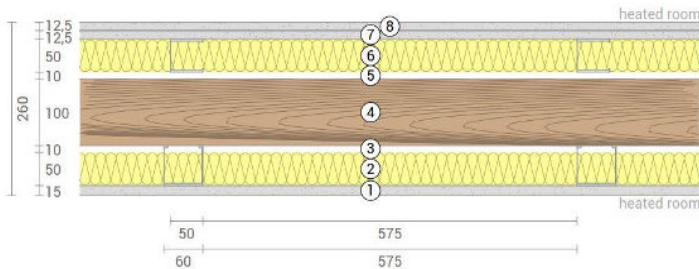
Thermal protection
W/(m²K)
0,35

Sound insulation
dB
63

Ecology
kg CO₂ eq./m²
-50

IW 08 FF

Interior wall / Self-supporting formwork
Facing formwork



No	mm	Material
1	15	Gt-F board
2	50	Rock wool
3	60	CW-profile mounted elastically or free
4	100	KLH® - CLT
5	10	Air gap
6	50	CW-profile self supporting, rock wool
7	12,5	Gt-F board
8	12,5	Gt-F board

R*EI (fire attack on both sides)
90 minutes

U-Value
0,29 W/(m²K)

Rw
64 (-3;9) dB

Thickness
260 mm
Mass per squaremeter
85 kg/m²

Global warming potential
-46 kg CO ₂ eq./m²
Primary energy (n. renewable)
118 kWh/m²

Link Ubakus
[IW 08 FF Ubakus](#)

Link pre-dimensioning fire
[KLH REI 90](#)

Fire protection
R*EI
90

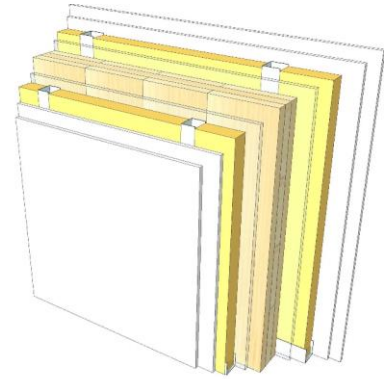
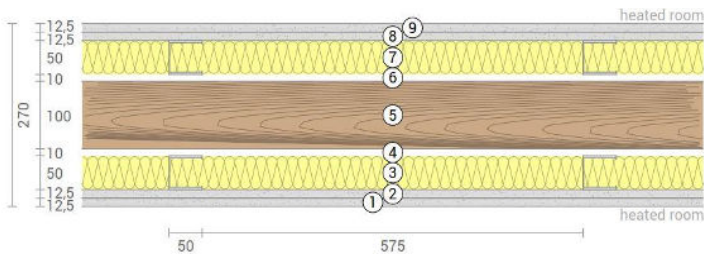
Thermal protection
W/(m²K)
0,29

Sound insulation
dB
64

Ecology
kg CO₂eq./m²
-46

IW 08 FF2

Interior wall / Self-supporting formwork
both-sided



No	mm	Material
1	12,5	Gt-F board
2	12,5	Gt-F board
3	50	CW-profile self supporting, rock wool
4	10	Air gap
5	100	KLH® - CLT
6	10	Air gap
7	50	CW-profile self supporting, rock wool
8	12,5	Gt-F board
9	12,5	Gt-F board

R*EI (fire attack on both sides)
90 minutes

U-Value
0,28 W/(m²K)

Rw
70 (-4;-11) dB

Thickness
270 mm
Mass per squaremeter
91 kg/m²

Global warming potential
-48 kg CO ₂ eq./m²
Primary energy (n. renewable)
115 kWh/m²

Link Ubakus
[IW 08 FF2 Ubakus](#)

Link pre-dimensioning fire
[KLH REI 90](#)

Fire protection
R*EI
90

Thermal protection
W/(m²K)
0,28

Sound insulation
dB
70

Ecology
kg CO₂eq./m²
-48