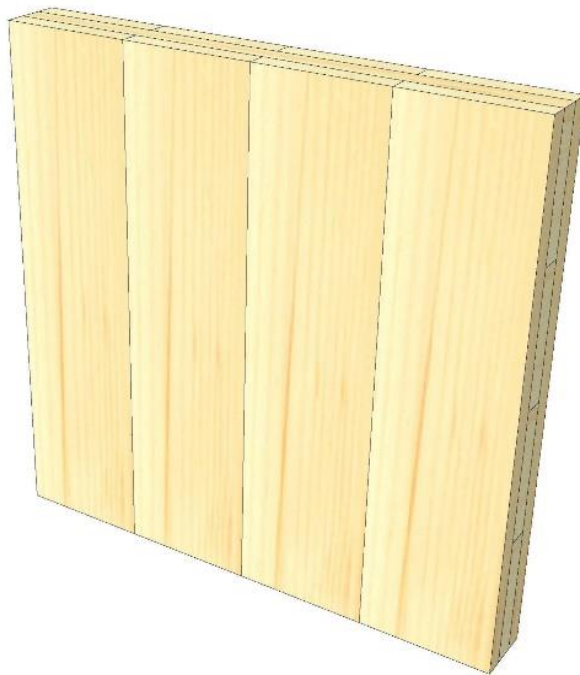
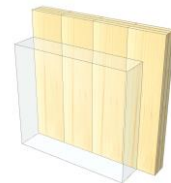


IW 02

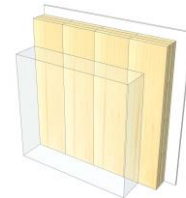
KLH® 3s 100



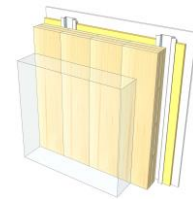
KLH® Visible



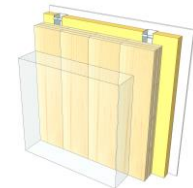
+ G



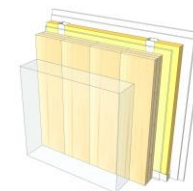
+ RP



+ FF



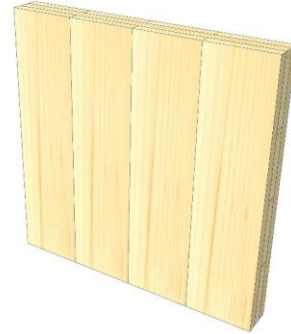
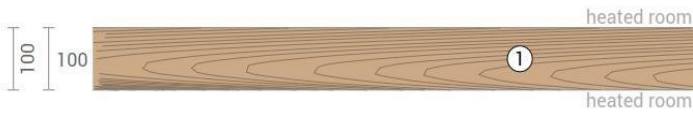
+ FF free / 2*G



	KLH® Visible	+ G	+ RP	+ FF	+ FF free / 2*G
Sound R_w [dB]	33	34	44	47	59
Thermal U [W/m^2K]	0,91	0,87	0,60	0,45	0,43
Fire R^*EI [min]	30	30	30	30	30
Thickness [mm]	100	113	140	175	185
Ecology [$kg\ CO_2\ eq./m^2$]	-67	-65	-62	-58	-58

IW 02 V

Interior wall / KLH® - CLT 100 TT



No	mm	Material
1	100	KLH® - CLT

R*EI	(fire attack on both sides)
30	minutes

U-Value
0,91 W/(m²K)

Rw
33 (-1;-4) dB

Thickness
100 mm
Mass per squaremeter
47 kg/m²

Global warming potential
-67 kg CO ₂ eq./m²
Primary energy (n. renewable)
39 kWh/m²

Link Ubakus
[IW 02 V Ubakus](#)

Link pre-dimensioning fire
[KLH REI 30](#)

Fire protection
 R*EI
30

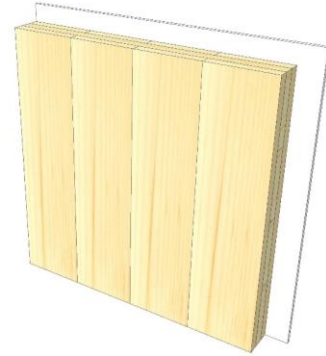
Thermal protection
 W/(m²K)
0,91

Sound insulation
 dB
33

Ecology
 kg CO₂eq./m²
-67

IW 02 G

Interior wall / KLH® - CLT 100 TT
Cladded



No	mm	Material
1	12,5	Gt-F board
2	100	KLH® - CLT

R*EI (fire attack on both sides)
30 minutes

U-Value
0,87 W/(m²K)

Rw
34 (-1;-4) dB

Thickness
113 mm
Mass per squaremeter
57 kg/m²

Global warming potential
-65 kg CO ₂ eq./m²
Primary energy (n. renewable)
49 kWh/m²

Link Ubakus
[IW 02 G Ubakus](#)

Link pre-dimensioning fire
[KLH REI 30](#)

Fire protection
R*EI
30

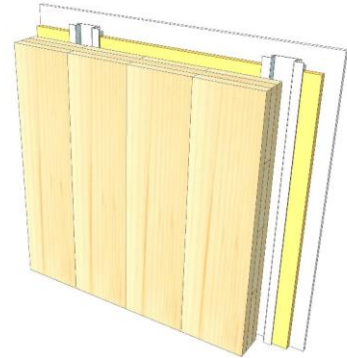
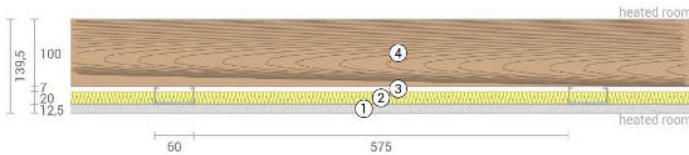
Thermal protection
W/(m²K)
0,87

Sound insulation
dB
34

Ecology
kg CO₂eq./m²
-65

IW 02 RP

Interior wall / KLH® - CLT 100 TT
Resilient profile



No	mm	Material
1	12,5	Gt-F board
2	20	Mineral wool
3	27	Resilient profile
4	100	KLH® - CLT

R*EI (fire attack on both sides)
30 minutes

U-Value
0,60 W/(m²K)

Rw
44 (-1;6) dB

Thickness
140 mm
Mass per squaremeter
58 kg/m²

Global warming potential
-62 kg CO ₂ eq./m²
Primary energy (n. renewable)
61 kWh/m²

Link Ubakus
[IW 02 RP Ubakus](#)

Link pre-dimensioning fire
[KLH REI 30](#)

Fire protection
R*EI
30

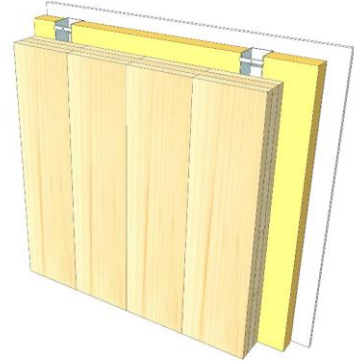
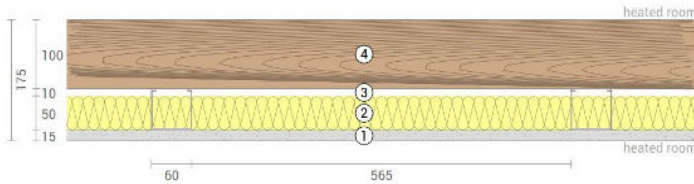
Thermal protection
W/(m²K)
0,60

Sound insulation
dB
44

Ecology
kg CO₂eq./m²
-62

IW 02 FF

Interior wall / KLH® - CLT 100 TT
Facing formwork



No	mm	Material
1	15	Gt-F board
2	50	Rock wool
3	60	CW-profile mounted elastically or free
4	100	KLH® - CLT

R*EI (fire attack on both sides)
30 minutes

U-Value
0,45 W/(m²K)

Rw
47 (-2;-7) dB

Thickness
175 mm
Mass per squaremeter
63 kg/m²

Global warming potential
-58 kg CO ₂ eq./m²
Primary energy (n. renewable)
73 kWh/m²

Link Ubakus
[IW 02 FF Ubakus](#)

Link pre-dimensioning fire
[KLH REI 30](#)

Fire protection
R*EI
30

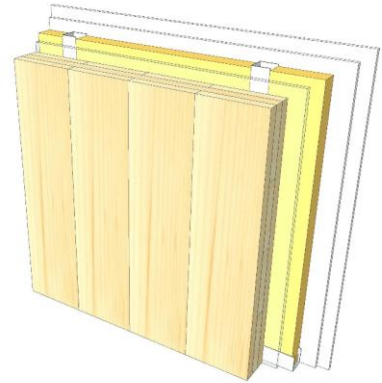
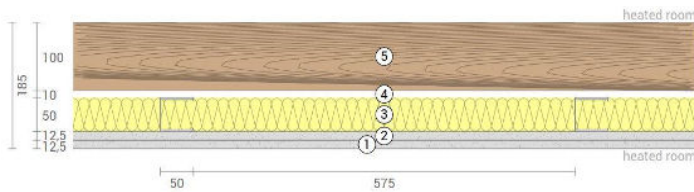
Thermal protection
W/(m²K)
0,45

Sound insulation
dB
47

Ecology
kg CO₂ eq./m²
-58

IW 02 FF2

Interior wall / KLH® - CLT 100 TT
Self-supporting formwork



No	mm	Material
1	12,5	Gt-F board
2	12,5	Gt-F board
3	50	CW-profile self supporting, rock wool
4	10	Air gap
5	100	KLH® - CLT

R*EI (fire attack on both sides)
30 minutes

U-Value
0,43 W/(m²K)

Rw
59 (-2;-9) dB

Thickness
185 mm
Mass per squaremeter
69 kg/m²

Global warming potential
-58 kg CO ₂ eq./m²
Primary energy (n. renewable)
77 kWh/m²

Link Ubakus
[IW 02 FF2 Ubakus](#)

Link pre-dimensioning fire
[KLH REI 30](#)

Fire protection
R*EI
30

Thermal protection
W/(m²K)
0,43

Sound insulation
dB
59

Ecology
kg CO₂eq./m²
-58