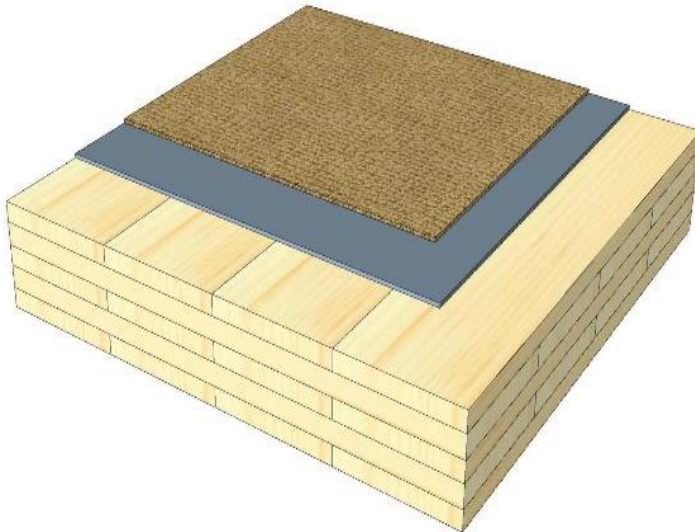
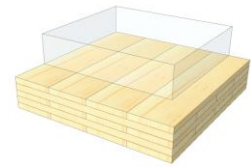


GD 09

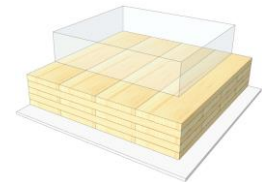
Carpet floor



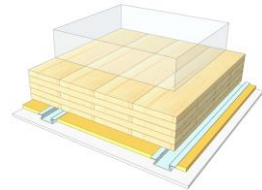
KLH® Visible



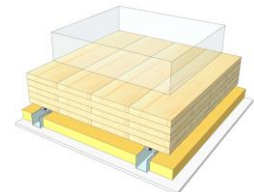
+ G



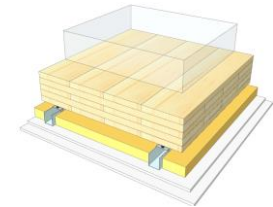
+ FS



+ SC



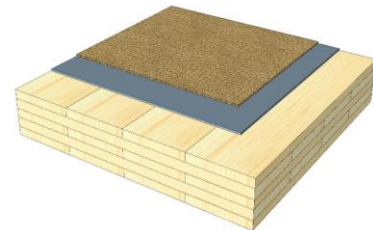
+ SC / 2*G



	KLH® Visible	+ G	+ RP	+ SC	+ SC / 2*G
Airborne Rw [dB]	35	36	45	55	57
Impact Ln,w [dB]	62	62	58	53	48
Thermal U [W/m²K]	0,56	0,54	0,43	0,35	0,35
Fire R*EI [min]	90	120	120	120	120
Thickness [mm]	175	188	215	250	260
Ecology [kg CO2 eq./m²]	-108	-106	-102	-99	-97

GD 09 V

Compartment floor / carpet floor



No	mm	Material
1	15	KLH® - CLT
2	160	Carpet floor

R*EI (fire attack from below)
90 minutes

U-Value
0,56 W/(m²K)

Rw
35 (-2;-3) dB
Lnw
62 (0) dB

Thickness
175 mm
Mass per squaremeter
78 kg/m²

Global warming potential
-108 kg CO ₂ eq./m²
Primary energy (n. renewable)
62 kWh/m²

Link Ubakus
[GD 09 V Ubakus](#)

Link pre-dimensioning fire
[KLH REI 90](#)

Fire resistance
R*EI
90

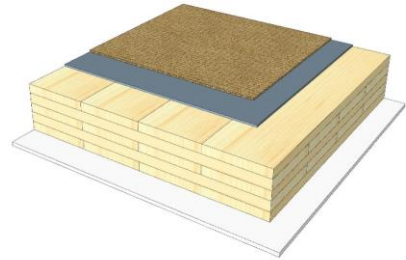
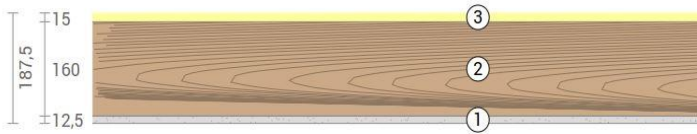
Thermal protection
W/(m²K)
0,56

Sound insulation
dB
35

Ecology
kg CO₂eq./m²
-108

GD 09 G

Compartment floor / carpet floor, cladded



No	mm	Material
1	12,5	Gt-F board
2	160	KLH® - CLT
3	15	Carpet floor

R*EI (fire attack from below)	120 minutes
-------------------------------	--------------------

U-Value	0,54 W/(m²K)
---------	---------------------

Rw	36 (-2;-3) dB
Lnw	62 (0) dB

Thickness	188 mm
Mass per squaremeter	88 kg/m²

Global warming potential	-106 kg CO ₂ eq./m²
Primary energy (n. renewable)	73 kWh/m²

Link Ubakus
[GD 09 G Ubakus](#)

Link pre-dimensioning fire
[KLH REI 120](#)

Fire resistance
R*EI
120

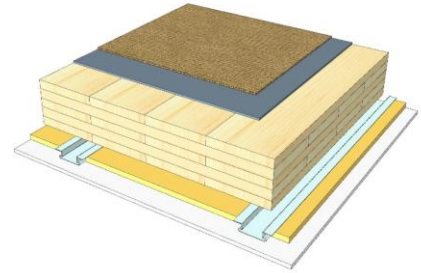
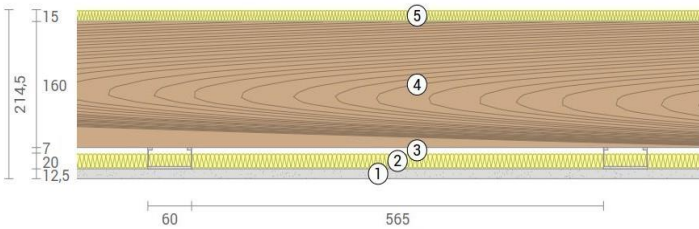
Thermal protection
W/(m²K)
0,54

Sound insulation
dB
36

Ecology
kg CO₂eq./m²
-106

GD 09 RP

Compartment floor / carpet floor
SC on resilient profiles



No	mm	Material
1	12,5	Gt-F board
2	20	Mineral wool
3	27	Resilient profile
4	160	KLH® - CLT
5	15	Carpet floor

R*EI (fire attack from below)
120 minutes

U-Value
0,43 W/(m²K)

Rw
45 (-4;-3) dB

Lnw
58 (1) dB

Thickness
215 mm

Mass per squaremeter
90 kg/m²

Global warming potential
-102 kg CO ₂ eq./m²

Primary energy (n. renewable)
84 kWh/m²

Link Ubakus
[GD 09 RP Ubakus](#)

Link pre-dimensioning fire
[KLH REI 120](#)

Fire resistance
R*EI
120

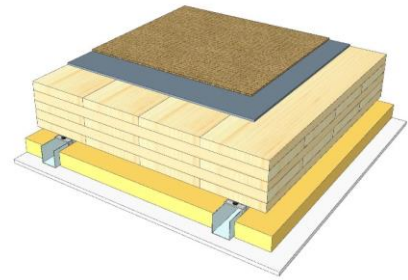
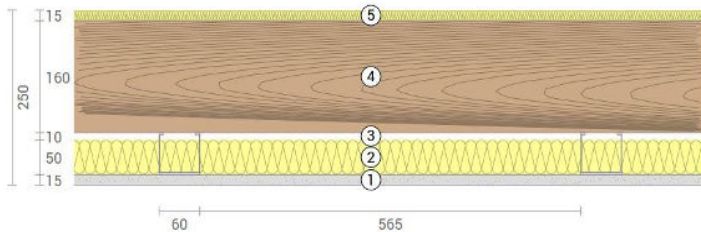
Thermal protection
W/(m²K)
0,43

Sound insulation
dB
45

Ecology
kg CO₂eq./m²
-102

GD 09 SC

Compartment floor / carpet floor
SC on CD-profiles



No	mm	Material
1	12,5	Gt-F board
2	50	Mineral wool
3	60	CD-profile
4	160	KLH® - CLT
5	15	Carpet floor

R*EI (fire attack from below)
120 minutes

U-Value
0,35 W/(m²K)

Rw
55 (-1;-6) dB
Lnw
53 (1) dB

Thickness
250 mm
Mass per squaremeter
93 kg/m²

Global warming potential
-99 kg CO ₂ eq./m²
Primary energy (n. renewable)
94 kWh/m²

Link Ubakus
[GD 09 SC Ubakus](#)

Link pre-dimensioning fire
[KLH REI 120](#)

Fire resistance
R*EI
120

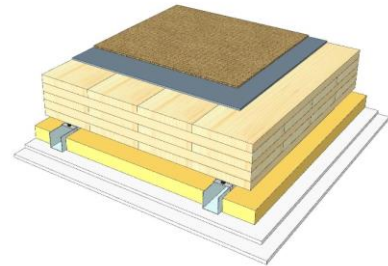
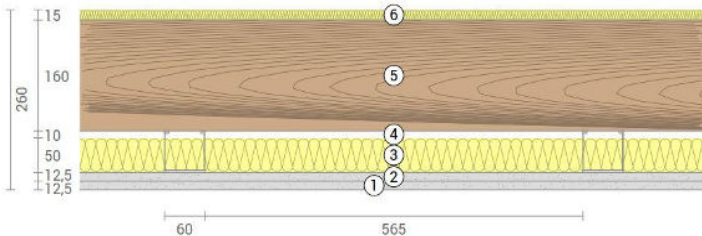
Thermal protection
W/(m²K)
0,35

Sound insulation
dB
55

Ecology
kg CO₂eq./m²
-99

GD 09 SC2

Compartment floor / carpet floor
 SC on CD-profiles, resilient clips



No	mm	Material
1	12,5	Gt-F board
2	12,5	Gt-F board
3	50	Mineral wool
4	60	CD-profile on resilient clips
5	160	KLH® - CLT
6	15	Carpet floor

R*EI (fire attack from below)
120 minutes

U-Value
0,35 W/(m²K)

Rw
57 (-1;-5) dB

Lnw
48 (2) dB

Thickness
260 mm
Mass per squaremeter
101 kg/m²

Global warming potential
-97 kg CO ₂ eq./m²
Primary energy (n. renewable)
103 kWh/m²

Link Ubakus
[GD 09 SC2 Ubakus](#)

Link pre-dimensioning fire
[KLH REI 120](#)

Fire resistance
 R*EI
120

Thermal protection
 W/(m²K)
0,35

Sound insulation
 dB
57

Ecology
 kg CO₂eq./m²
-97