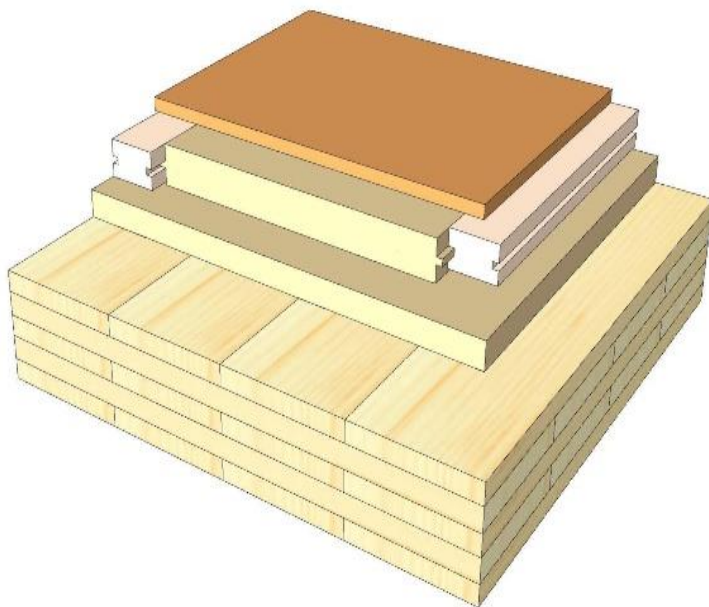
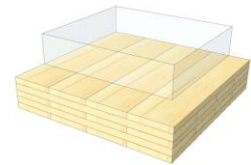


# GD 07

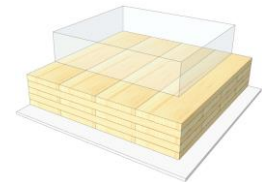
## Wood planks / wood fiber system



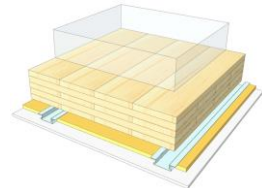
KLH® Visible



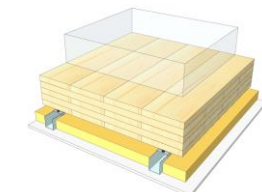
+ G



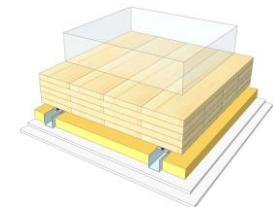
+ FS



+ SC



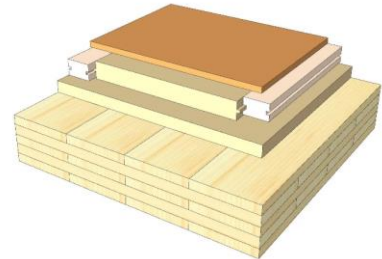
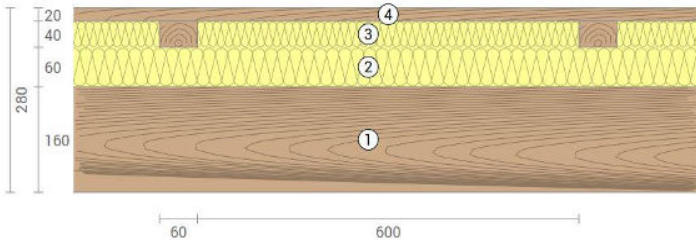
+ SC / 2\*G



	KLH® Visible	+ G	+ RP	+ SC	+ SC / 2*G
<b>Airborne</b> Rw [dB]	53	54	56	58	70
<b>Impact</b> Ln,w [dB]	64	64	60	54	48
<b>Thermal</b> U [W/m²K]	0,25	0,25	0,22	0,20	0,20
<b>Fire</b> R*EI [min]	90	120	120	120	120
<b>Thickness</b> [mm]	280	293	320	353	365
<b>Ecology</b> [kg CO2 eq./m²]	-140	-137	-134	-131	-129

# GD 07 V

Compartment floor / wood planks, decoupled insulation system



No	mm	Material
1	160	KLH® - CLT
2	60	Wood fiberboard
3	40	Wood fiberboard
4	35	Sub-construction timber
5	20	Wood planks

R*EI (fire attack from below)
<b>90</b> minutes

U-Value
<b>0,25</b> W/(m²K)

Rw
<b>53</b> (-2;-6) dB

Lnw
<b>64</b> (0) dB

Thickness
<b>280</b> mm

Mass per squaremeter
<b>99</b> kg/m²

Global warming potential
<b>-140</b> kg CO <sub>2</sub> eq./m²

Primary energy (n. renewable)
<b>103</b> kWh/m²

Link Ubakus  
[GD 07 V Ubakus](#)

Link pre-dimensioning fire  
[KLH REI 90](#)

Fire resistance  
R\*EI  
**90**

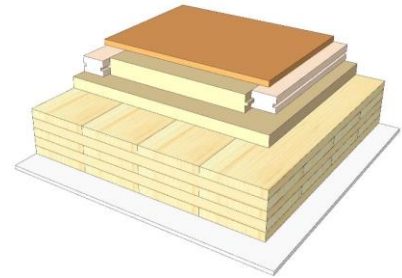
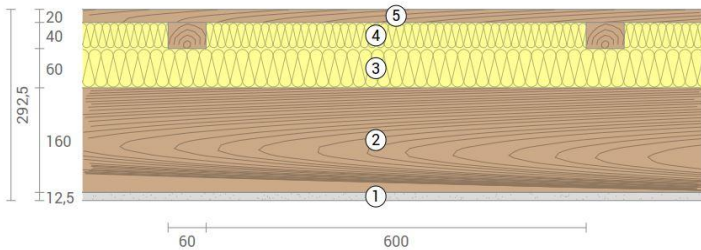
Thermal protection  
W/(m²K)  
**0,25**

Sound insulation  
dB  
**53**

Ecology  
kg CO<sub>2</sub>eq./m²  
**-140**

# GD 07 G

Compartment floor / wood planks, decoupled insulation system cladded



No	mm	Material
1	12,5	Gt-F board
2	160	KLH® - CLT
3	60	Wood fiberboard
4	40	Wood fiberboard
5	35	Sub-construction timber
6	20	Wood planks

R*EI (fire attack from below)	<b>120</b> minutes
-------------------------------	--------------------

U-Value	<b>0,25</b> W/(m²K)
---------	---------------------

Rw	<b>54</b> (-2;-6) dB
----	----------------------

Lnw	<b>64</b> (0) dB
-----	------------------

Thickness	<b>293</b> mm
-----------	---------------

Mass per squaremeter	<b>109</b> kg/m²
----------------------	------------------

Global warming potential	<b>-137</b> kg CO <sub>2</sub> eq./m²
--------------------------	---------------------------------------

Primary energy (n. renewable)	<b>114</b> kWh/m²
-------------------------------	-------------------

Link Ubakus  
[GD 07 G Ubakus](#)

Link pre-dimensioning fire  
[KLH REI 120](#)

Fire resistance  
R\*EI  
**120**

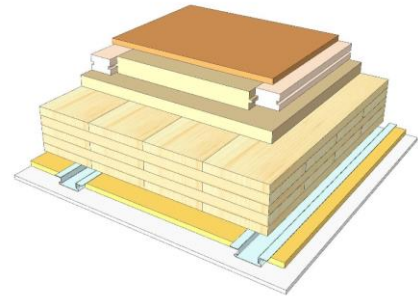
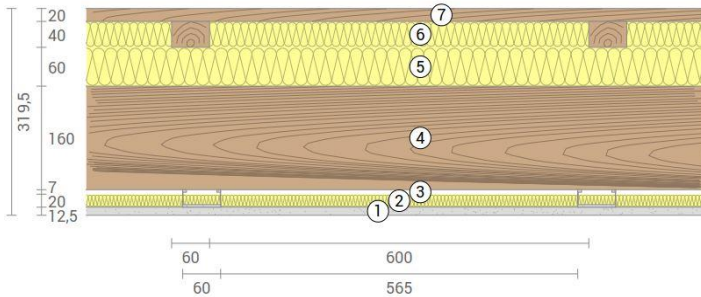
Thermal protection  
W/(m²K)  
**0,25**

Sound insulation  
dB  
**54**

Ecology  
kg CO<sub>2</sub>eq./m²  
**-137**

# GD 07 RP

Compartment floor / wood planks, decoupled insulation system  
SC on resilient profiles



No	mm	Material
1	12,5	Gt-F board
2	20	Mineral wool
3	27	Resilient profile
4	160	KLH® - CLT
5	60	Wood fiberboard
6	40	Wood fiberboard
7	35	Sub-construction timber
8	20	Wood planks

R*EI (fire attack from below)	<b>120</b> minutes
-------------------------------	--------------------

U-Value	<b>0,22</b> W/(m²K)
---------	---------------------

Rw	<b>56</b> (-2;-7) dB
----	----------------------

Lnw	<b>60</b> (1) dB
-----	------------------

Thickness	<b>320</b> mm
-----------	---------------

Mass per squaremeter	<b>111</b> kg/m²
----------------------	------------------

Global warming potential	<b>-134</b> kg CO <sub>2</sub> eq./m²
--------------------------	---------------------------------------

Primary energy (n. renewable)	<b>127</b> kWh/m²
-------------------------------	-------------------

Link Ubakus  
[GD 07 RP Ubakus](#)

Link pre-dimensioning fire  
[KLH REI 120](#)

Fire resistance  
R\*EI  
**120**

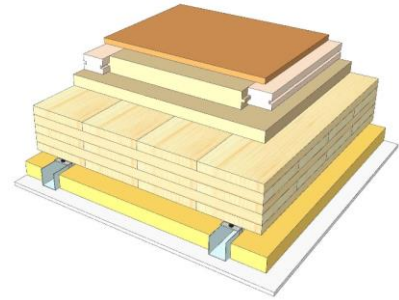
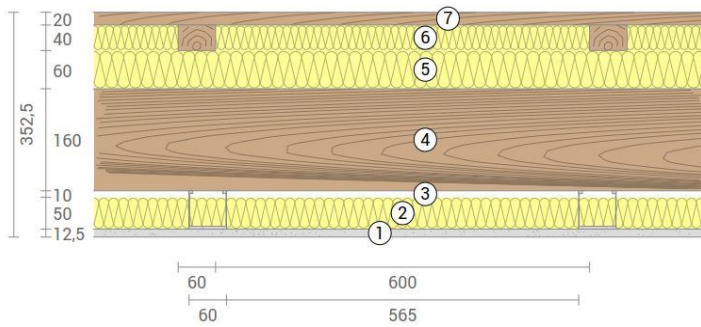
Thermal protection  
W/(m²K)  
**0,22**

Sound insulation  
dB  
**56**

Ecology  
kg CO<sub>2</sub>eq./m²  
**-134**

# GD 07 SC

Compartment floor / wood planks, decoupled insulation system  
SC on CD-profiles



No	mm	Material
1	12,5	Gt-F board
2	50	Mineral wool
3	60	CD-profile
4	160	KLH® - CLT
5	60	Wood fiberboard
6	40	Wood fiberboard
7	35	Sub-construction timber
8	20	Wood planks

R*EI (fire attack from below)	<b>120</b> minutes
-------------------------------	--------------------

U-Value	<b>0,2</b> W/(m²K)
---------	--------------------

Rw	<b>58</b> (-1;-6) dB
----	----------------------

Lnw	<b>54</b> (1) dB
-----	------------------

Thickness	<b>353</b> mm
-----------	---------------

Mass per squaremeter	<b>112</b> kg/m²
----------------------	------------------

Global warming potential	<b>-131</b> kg CO <sub>2</sub> eq./m²
--------------------------	---------------------------------------

Primary energy (n. renewable)	<b>136</b> kWh/m²
-------------------------------	-------------------

Link Ubakus  
[GD 07 SC Ubakus](#)

Link pre-dimensioning fire  
[KLH REI 120](#)

Fire resistance  
R\*EI  
**120**

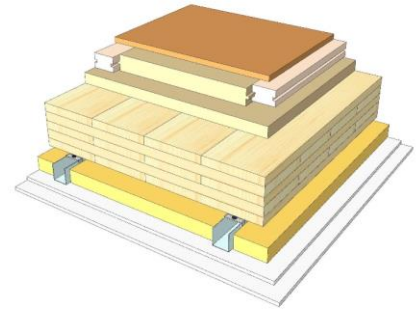
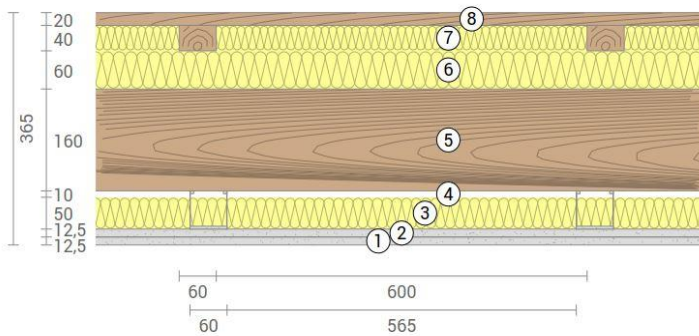
Thermal protection  
W/(m²K)  
**0,2**

Sound insulation  
dB  
**58**

Ecology  
kg CO<sub>2</sub>eq./m²  
**-131**

# GD 07 SC2

Compartment floor / wood planks, decoupled insulation system  
SC on CD-profiles, resilient clips



No	mm	Material
1	12,5	Gt-F board
2	12,5	Gt-F board
3	50	Mineral wool
4	60	CD-profile on resilient clips
5	160	KLH® - CLT
6	60	Wood fiberboard
7	40	Wood fiberboard
8	35	Sub-construction timber
9	20	Wood planks

R*EI (fire attack from below)
<b>120</b> minutes

U-Value
<b>0,2</b> W/(m²K)

Rw
<b>70</b> (-4;12) dB

Lnw
<b>48</b> (5) dB

Thickness
<b>365</b> mm
Mass per squaremeter
<b>122</b> kg/m²

Global warming potential
<b>-129</b> kg CO <sub>2</sub> eq./m²
Primary energy (n. renewable)
<b>147</b> kWh/m²

Link Ubakus  
[GD 07 SC2 Ubakus](#)

Link pre-dimensioning fire  
[KLH REI 120](#)

Fire resistance  
R\*EI  
**120**

Thermal protection  
W/(m²K)  
**0,2**

Sound insulation  
dB  
**70**

Ecology  
kg CO<sub>2</sub>eq./m²  
**-129**