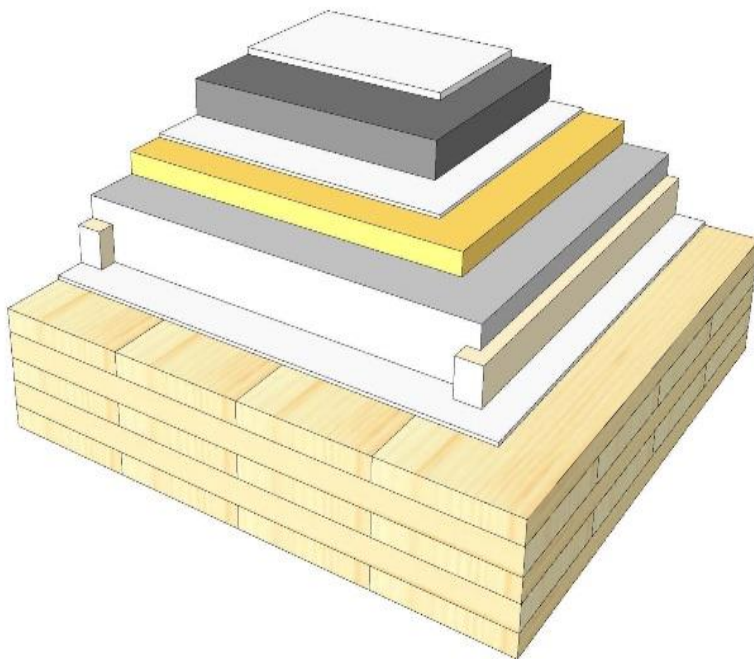
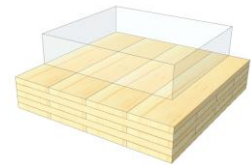


GD 02

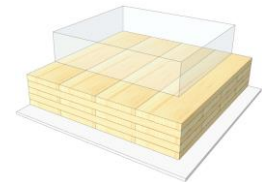
Wet screed / heavy fill (loose or inserts)



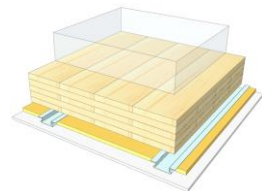
KLH® Visible



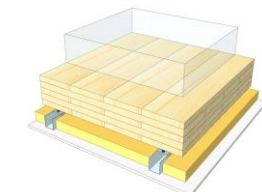
+ G



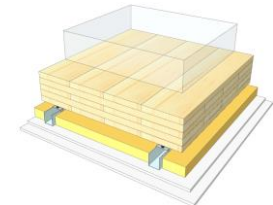
+ FS



+ SC



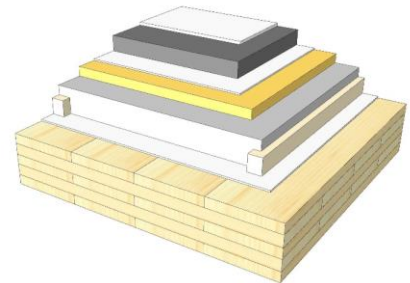
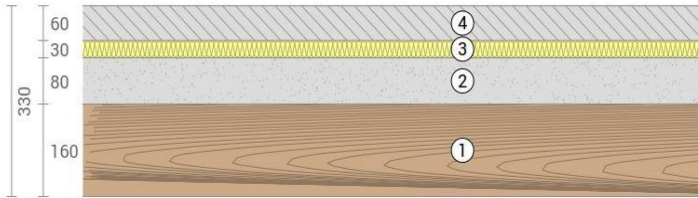
+ SC / 2*G



	KLH® Visible	+ G	+ RP	+ SC	+ SC / 2*G
Airborne Rw [dB]	61	62	65	68	73
Impact Ln,w [dB]	44	44	39	37	35
Thermal U [W/m²K]	0,40	0,39	0,33	0,28	0,28
Fire R*EI [min]	90	120	120	120	120
Thickness [mm]	330	343	370	403	415
Ecology [kg CO2 eq./m²]	-92	-90	-86	-84	-81

GD 02 V

Compartment floor / Cement screed, heavy fill
(loose or battens)



No	mm	Material
1	160	KLH® - CLT
2	80	Heavy fill (loose or battens)
3	30	Impact sound insulation, $s' \leq 10 \text{ MN/m}^3$
4	60	Wet screed

R*EI (fire attack from below)
90 minutes

U-Value
0,4 W/(m²K)

Rw
61 (-1;-4) dB

Lnw
44 (-1) dB

Thickness
330 mm

Mass per squaremeter
318 kg/m²

Global warming potential
-92 kg CO ₂ eq./m²

Primary energy (n. renewable)
94 kWh/m²

Link Ubakus
[GD 02 V Ubakus](#)

Link pre-dimensioning fire
[KLH REI 90](#)

Fire resistance
R*EI
90

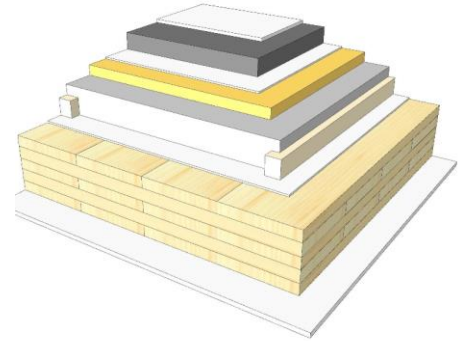
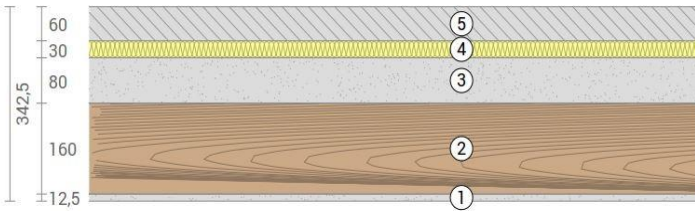
Thermal protection
W/(m²K)
0,4

Sound insulation
dB
61

Ecology
kg CO₂eq./m²
-92

GD 02 G

Compartment floor / Cement screed, heavy fill
(loose or battens) / cladded



No	mm	Material
1	12,5	Gt-F board
2	160	KLH® - CLT
3	80	Heavy fill (loose or battens)
4	30	Impact sound insulation, $s' \leq 10 \text{ MN/m}^3$
5	60	Wet screed

R*EI (fire attack from below)
120 minutes

U-Value
0,39 W/(m²K)

Rw
62 (-1;-4) dB

Lnw
44 (-1) dB

Thickness
343 mm

Mass per squaremeter
328 kg/m²

Global warming potential
-90 kg CO ₂ eq./m²

Primary energy (n. renewable)
104 kWh/m²

Link Ubakus
[GD 02 G Ubakus](#)

Link pre-dimensioning fire
[KLH REI 120](#)

Fire resistance
R*EI
120

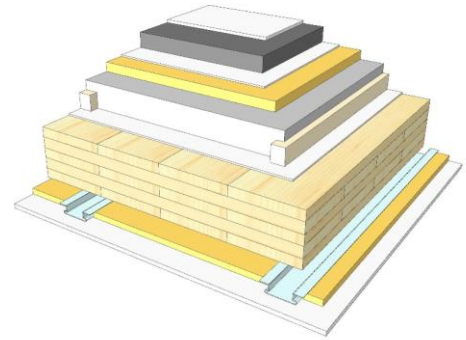
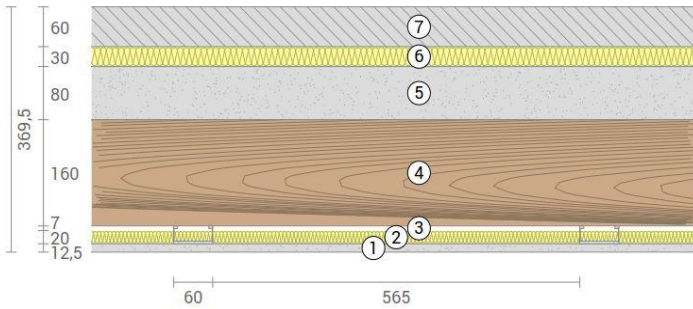
Thermal protection
W/(m²K)
0,39

Sound insulation
dB
62

Ecology
kg CO₂eq./m²
-90

GD 02 RP

Compartment floor / Cement screed, heavy fill
(loose or battens) / SC on resilient profiles



No	mm	Material
1	12,5	Gt-F board
2	20	Mineral wool
3	27	Resilient profile
4	160	KLH® - CLT
5	80	Heavy fill (loose or battens)
6	30	Impact sound insulation, $s' \leq 10 \text{ MN/m}^3$
7	60	Wet screed

R*EI (fire attack from below)	120 minutes
-------------------------------	--------------------

U-Value	0,33 W/(m ² K)
---------	----------------------------------

Rw	65 (-2;-7) dB
----	----------------------

Lnw	39 (2) dB
-----	------------------

Thickness	370 mm
Mass per squaremeter	330 kg/m ²

Global warming potential	-86 kg CO ₂ eq./m ²
Primary energy (n. renewable)	116 kWh/m ²

Link Ubakus
[GD 02 RP Ubakus](#)

Link pre-dimensioning fire
[KLH REI 120](#)

Fire resistance
R*EI
120

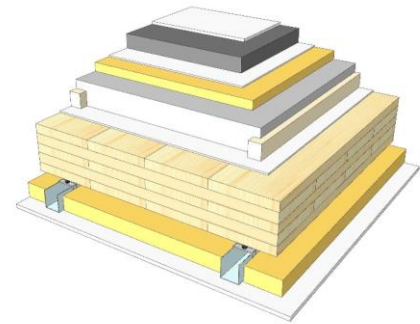
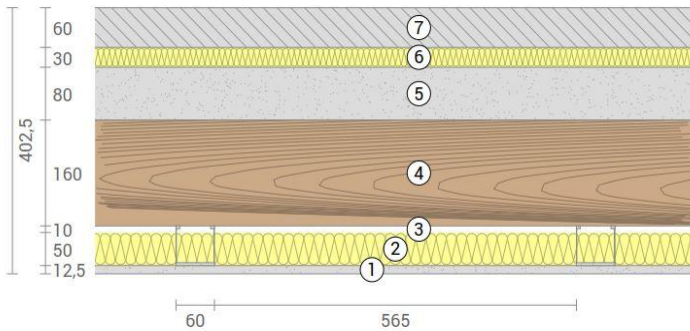
Thermal protection
W/(m²K)
0,33

Sound insulation
dB
65

Ecology
kg CO₂ eq./m²
-86

GD 02 SC

Compartment floor / Cement screed, heavy fill
(loose or battens) / SC on CD-profiles



No	mm	Material
1	12,5	Gt-F board
2	50	Mineral wool
3	60	CD-profile
4	160	KLH® - CLT
5	80	Heavy fill (loose or battens)
6	30	Impact sound insulation, $s' \leq 10 \text{ MN/m}^3$
7	60	Wet screed

R*EI (fire attack from below)	120 minutes
-------------------------------	--------------------

U-Value	0,28 W/(m²K)
---------	---------------------

Rw	68 (-2;-8) dB
----	----------------------

Lnw	37 (1) dB
-----	------------------

Thickness	403 mm
-----------	---------------

Mass per squaremeter	331 kg/m²
----------------------	------------------

Global warming potential	-84 kg CO ₂ eq./m²
--------------------------	--------------------------------------

Primary energy (n. renewable)	124 kWh/m²
-------------------------------	-------------------

Link Ubakus
[GD 02 SC Ubakus](#)

Link pre-dimensioning fire
[KLH REI 120](#)

Fire resistance
R*EI
120

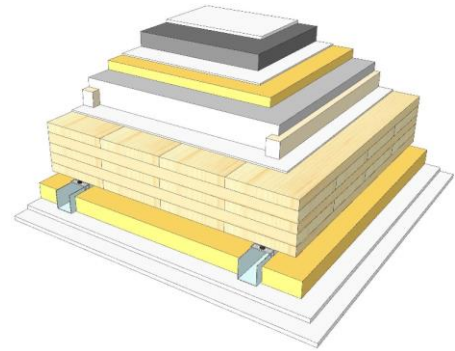
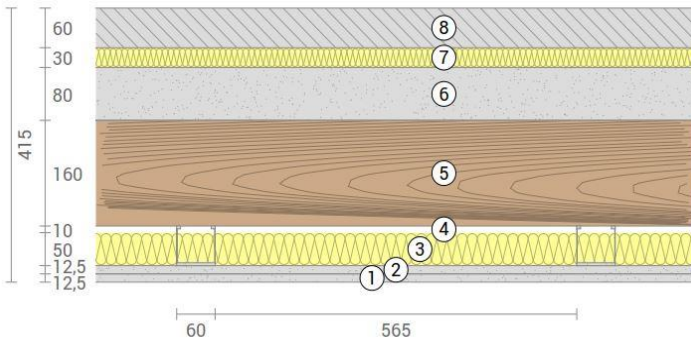
Thermal protection
W/(m²K)
0,28

Sound insulation
dB
68

Ecology
kg CO₂eq./m²
-84

GD 02 SC2

Compartment floor / Cement screed, heavy fill
(loose or battens) / SC on CD-profiles, resilient clips



No	mm	Material
1	12,5	Gt-F board
2	12,5	Gt-F board
3	50	Mineral wool
4	60	CD-profile on resilient clips
5	160	KLH® - CLT
6	80	Heavy fill (loose or battens)
7	30	Impact sound insulation, $s' \leq 10 \text{ MN/m}^3$
8	60	Wet screed

R*EI (fire attack from below)	120 minutes
-------------------------------	--------------------

U-Value	0,28 W/(m ² K)
---------	----------------------------------

Rw	73 (-1;-4) dB
----	----------------------

Lnw	35 (4) dB
-----	------------------

Thickness	415 mm
-----------	---------------

Mass per squaremeter	341 kg/m ²
----------------------	------------------------------

Global warming potential	-81 kg CO ₂ eq./m ²
--------------------------	--

Primary energy (n. renewable)	134 kWh/m ²
-------------------------------	-------------------------------

Link Ubakus
[GD 02 SC2 Ubakus](#)

Link pre-dimensioning fire
[KLH REI 120](#)

Fire resistance
R*EI
120

Thermal protection
W/(m²K)
0,28

Sound insulation
dB
73

Ecology
kg CO₂ eq./m²
-81