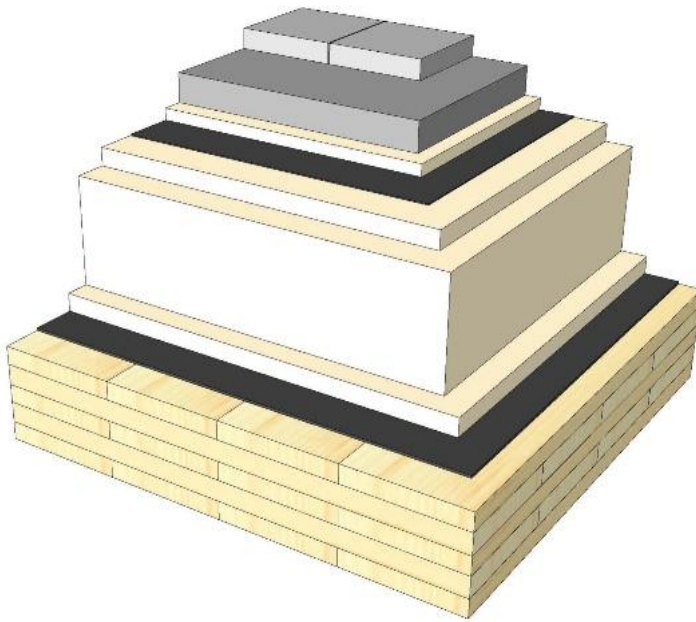
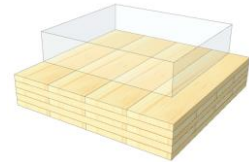


# DA 06

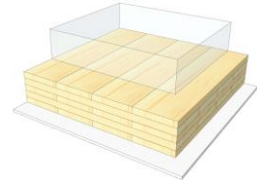
## Flat roof / concrete blocks



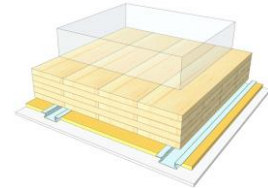
KLH® Visible



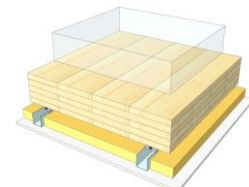
+ G



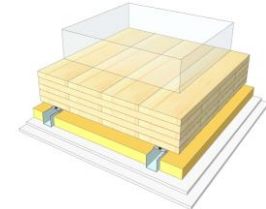
+ RP



+ SC



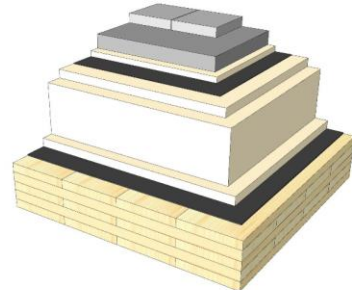
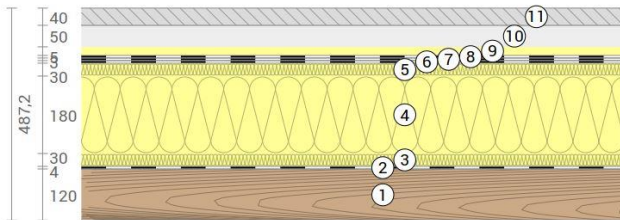
+ SC / 2\*G



	KLH® Visible	+ G	+ RP	+ SC	+ SC / 2*G
<b>Airborne</b> Rw [dB]	55	56	58	60	70
<b>Impact</b> Ln,w [dB]	49	49	45	42	33
<b>Thermal</b> U [W/m²K]	0,12	0,12	0,11	0,10	0,10
<b>Fire</b> R*EI [min]	60	60	60	60	90
<b>Thickness</b> [mm]	487	500	527	560	572
<b>Ecology</b> [kg CO2 eq./m²]	-49	-47	-43	-41	-38

# DA 06 V

## Roof terrace / EPS / paving slabs



No	mm	Material
1	120	KLH® - CLT
2	4	Vapour barrier
3	30	Impact sound insulation; EPS
4	180	Roof panel, EPS
5	30	Impact sound insulation; EPS
6	3	Roof sealing sheet, 1st layer
7	5	Roof sealing sheet, 2nd layer
8	5	Separating layer
9	20	Separation layer, XPS
10	50	Gravel fill
11	40	Concrete elements

R*EI (fire attack from below)
<b>60</b> minutes

U-Value
<b>0,12</b> W/(m²K)

Rw
<b>55</b> (-2;-6) dB

Lnw
<b>49</b> (-2) dB

Thickness
<b>487</b> mm
Mass per squaremeter
<b>279</b> kg/m²

Global warming potential
<b>-49</b> kg CO <sub>2</sub> eq./m²
Primary energy (n. renewable)
<b>358</b> kWh/m²

Link Ubakus  
[DA 06 V Ubakus](#)

Link pre-dimensioning fire  
[KLH REI 60](#)

Fire resistance  
R\*EI  
**60**

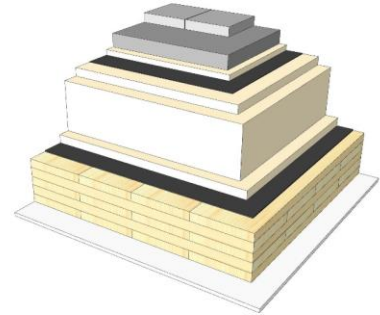
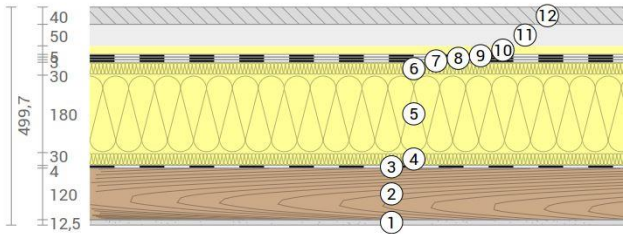
Thermal protection  
W/(m²K)  
**0,12**

Sound insulation  
dB  
**55**

Ecology  
kg CO<sub>2</sub>eq./m²  
**-49**

# DA 06 G

Roof terrace / EPS / paving slabs  
Cladded



No	mm	Material
1	12,5	Gt-F board
2	120	KLH® - CLT
3	4	Vapour barrier
4	30	Impact sound insulation; EPS
5	180	Roof panel, EPS
6	30	Impact sound insulation; EPS
7	3	Roof sealing sheet, 1st layer
8	5	Roof sealing sheet, 2nd layer
9	5	Separating layer
10	20	Separation layer, XPS
11	50	Gravel fill
12	40	Concrete elements

R*EI (fire attack from below)
<b>60</b> minutes

U-Value
<b>0,12</b> W/(m²K)

Rw
<b>56</b> (-2;-6) dB

Lnw
<b>49</b> (-2) dB

Thickness
<b>500</b> mm

Mass per squaremeter
<b>289</b> kg/m²

Global warming potential
<b>-47</b> kg CO <sub>2</sub> eq./m²

Primary energy (n. renewable)
<b>369</b> kWh/m²

Link Ubakus  
[DA 06 G Ubakus](#)

Link pre-dimensioning fire  
[KLH REI 60](#)

Fire resistance  
R\*EI  
**60**

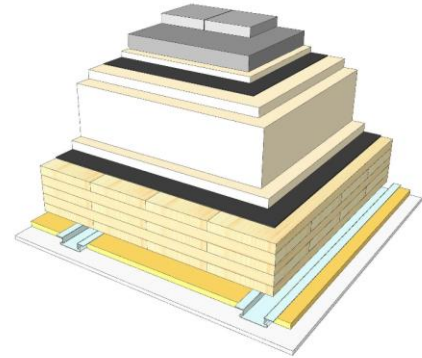
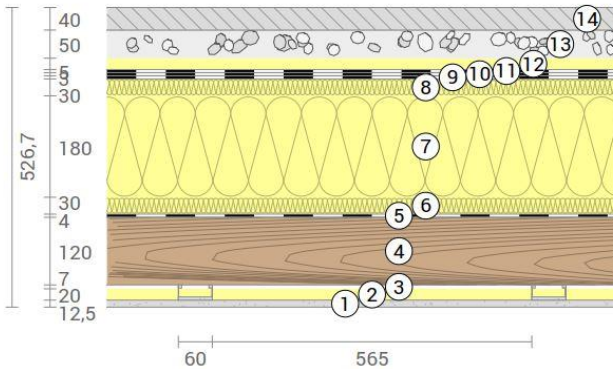
Thermal protection  
W/(m²K)  
**0,12**

Sound insulation  
dB  
**56**

Ecology  
kg CO<sub>2</sub>eq./m²  
**-47**

# DA 06 RP

Roof terrace / EPS / paving slabs  
 SC on resilient profiles



No	mm	Material
1	12,5	Gt-F board
2	20	Mineral wool
3	27	Resilient profile
4	120	KLH® - CLT
5	4	Vapour barrier
6	30	Impact sound insulation; EPS
7	180	Roof panel, EPS
8	30	Impact sound insulation; EPS
9	3	Roof sealing sheet, 1st layer
10	5	Roof sealing sheet, 2nd layer
11	5	Separating layer
12	20	Separation layer, XPS
13	50	Gravel fill
14	40	Concrete elements

<b>Thickness</b>	<b>527</b> mm
<b>Mass per squaremeter</b>	<b>290</b> kg/m <sup>2</sup>

Link Ubakus  
[DA 06 RP Ubakus](#)

<b>R*EI</b> (fire attack from below)	<b>60</b> minutes
--------------------------------------	-------------------

<b>U-Value</b>	<b>0,11</b> W/(m <sup>2</sup> K)
----------------	----------------------------------

<b>Rw</b>	<b>58</b> (-2;-6) dB
<b>Lnw</b>	<b>45</b> (-1) dB

<b>Global warming potential</b>	<b>-43</b> kg CO <sub>2</sub> eq./m <sup>2</sup>
<b>Primary energy (n. renewable)</b>	<b>380</b> kWh/m <sup>2</sup>

Link pre-dimensioning fire  
[KLH REI 60](#)

Fire resistance  
 R\*EI  
**60**

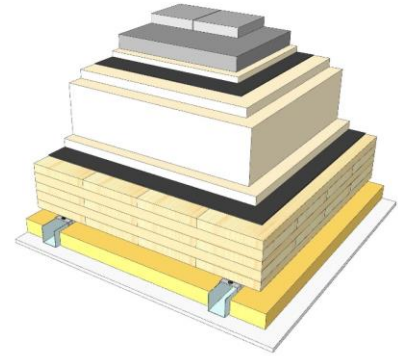
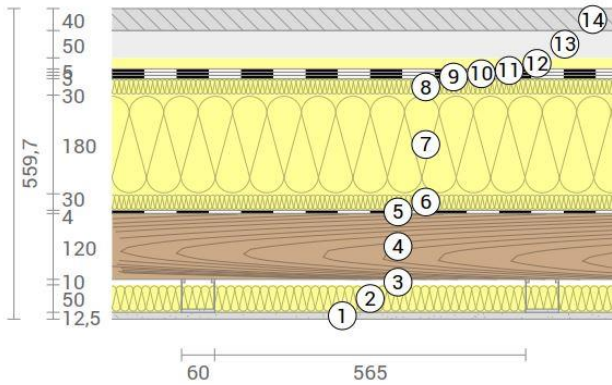
Thermal protection  
 W/(m<sup>2</sup>K)  
**0,11**

Sound insulation  
 dB  
**58**

Ecology  
 kg CO<sub>2</sub>eq./m<sup>2</sup>  
**-43**

# DA 06 SC

Roof terrace / EPS / paving slabs  
SC on CD-profiles



No	mm	Material
1	12,5	Gt-F board
2	50	Rock wool
3	60	CD-profiles
4	120	KLH® - CLT
5	4	Vapour barrier
6	30	Impact sound insulation; EPS
7	180	Roof panel, EPS
8	30	Impact sound insulation; EPS
9	3	Roof sealing sheet, 1st layer
10	5	Roof sealing sheet, 2nd layer
11	5	Separating layer
12	20	Separation layer, XPS
13	50	Gravel fill
14	40	Concrete elements

<b>Thickness</b>	<b>560</b> mm
<b>Mass per squaremeter</b>	<b>291</b> kg/m <sup>2</sup>

Link Ubakus  
[DA 06 SC Ubakus](#)

<b>R*EI</b> (fire attack from below)	<b>60</b> minutes
--------------------------------------	-------------------

<b>U-Value</b>	<b>0,1</b> W/(m <sup>2</sup> K)
----------------	---------------------------------

<b>Rw</b>	<b>60</b> (-2;-6) dB
-----------	----------------------

<b>Lnw</b>	<b>42</b> (1) dB
------------	------------------

<b>Global warming potential</b>	<b>-41</b> kg CO <sub>2</sub> eq./m <sup>2</sup>
---------------------------------	--

<b>Primary energy (n. renewable)</b>	<b>388</b> kWh/m <sup>2</sup>
--------------------------------------	-------------------------------

Link pre-dimensioning fire  
[KLH REI 60](#)

Fire resistance  
R\*EI  
**60**

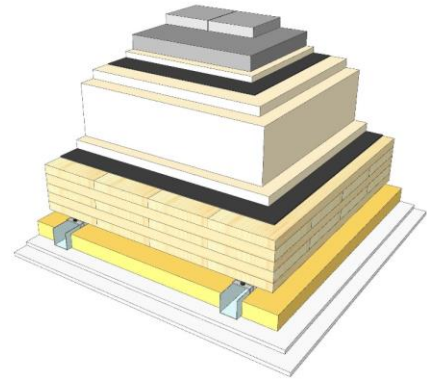
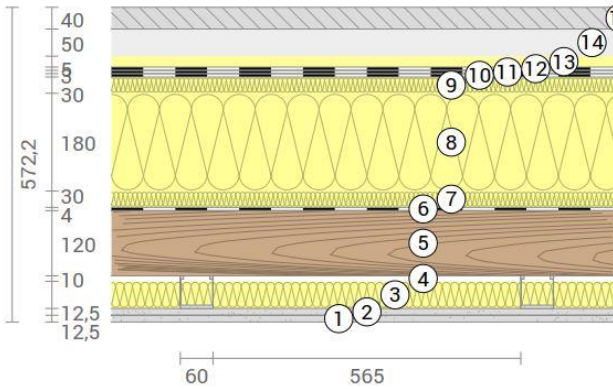
Thermal protection  
W/(m<sup>2</sup>K)  
**0,1**

Sound insulation  
dB  
**60**

Ecology  
kg CO<sub>2</sub>eq./m<sup>2</sup>  
**-41**

# DA 06 SC2

Roof terrace / EPS / paving slabs  
 SC on CD-profiles, resilient clips



No	mm	Material
1	12,5	Gt-F board
2	12,5	Gt-F board
3	50	Rock wool
4	60	CD-profiles on resilient clips
5	120	KLH® - CLT
6	4	Vapour barrier
7	30	Impact sound insulation; EPS
8	180	Roof panel, EPS
9	30	Impact sound insulation; EPS
10	3	Roof sealing sheet, 1st layer
11	5	Roof sealing sheet, 2nd layer
12	5	Separating layer
13	20	Separation layer, XPS
14	50	Gravel fill
15	40	Concrete elements
<b>Thickness</b>		
	<b>572</b>	mm
<b>Mass per squaremeter</b>		
	<b>301</b>	kg/m <sup>2</sup>

Link Ubakus  
[DA 06 SC2 Ubakus](#)

R\*EI (fire attack from below)  
**90** minutes

U-Value  
**0,1** W/(m<sup>2</sup>K)

Rw  
**70** (-1;-6) dB

Lnw  
**39** (1) dB

Global warming potential  
**-38** kg CO<sub>2</sub> eq./m<sup>2</sup>

Primary energy (n. renewable)  
**399** kWh/m<sup>2</sup>

Link pre-dimensioning fire  
[KLH REI 90](#)

Fire resistance  
 R\*EI  
**90**

Thermal protection  
 W/(m<sup>2</sup>K)  
**0,1**

Sound insulation  
 dB  
**70**

Ecology  
 kg CO<sub>2</sub>eq./m<sup>2</sup>  
**-38**