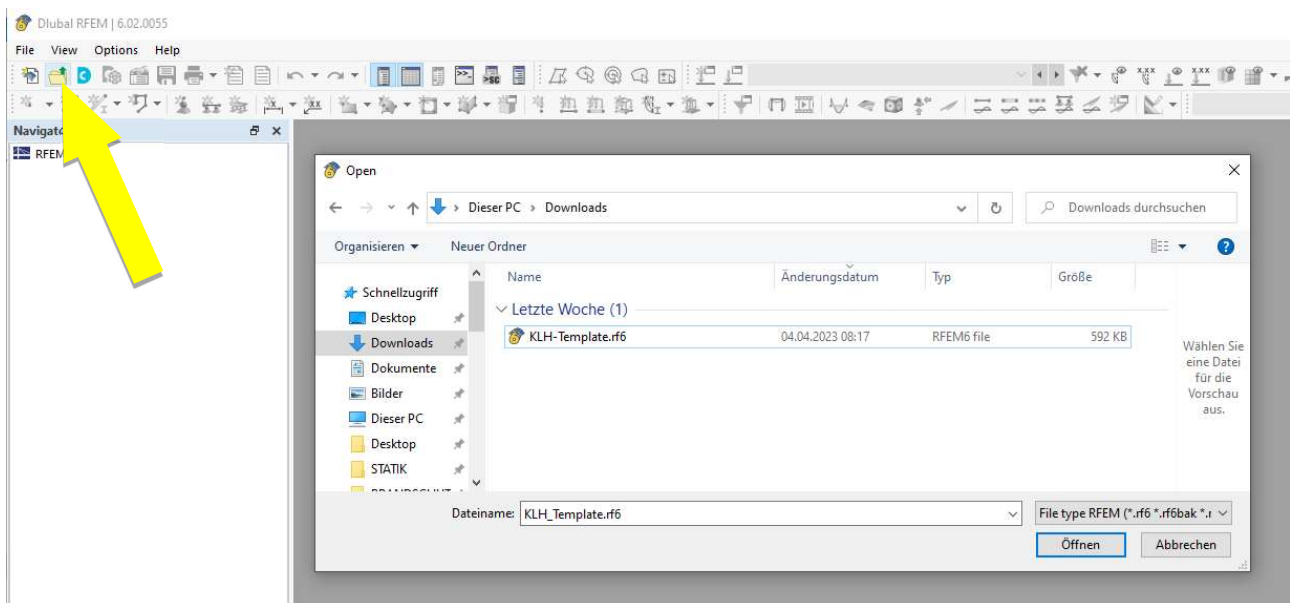


Using the template file “KLH-Template” for Dlubal RFEM6

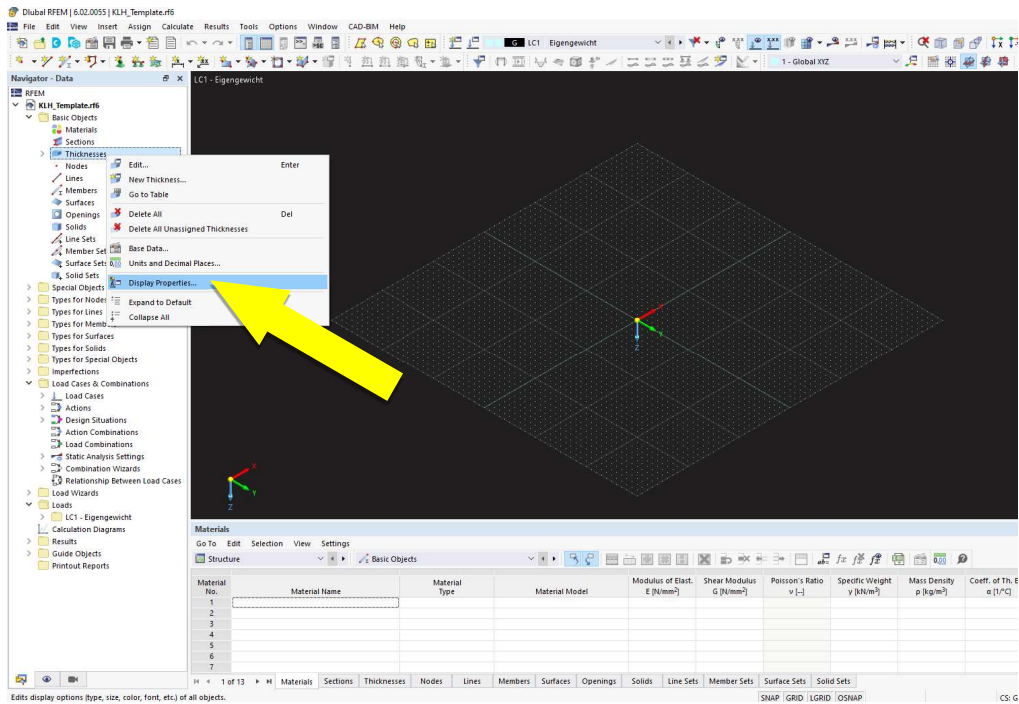
Step 1: Open the programme Dlubal RFEM 6



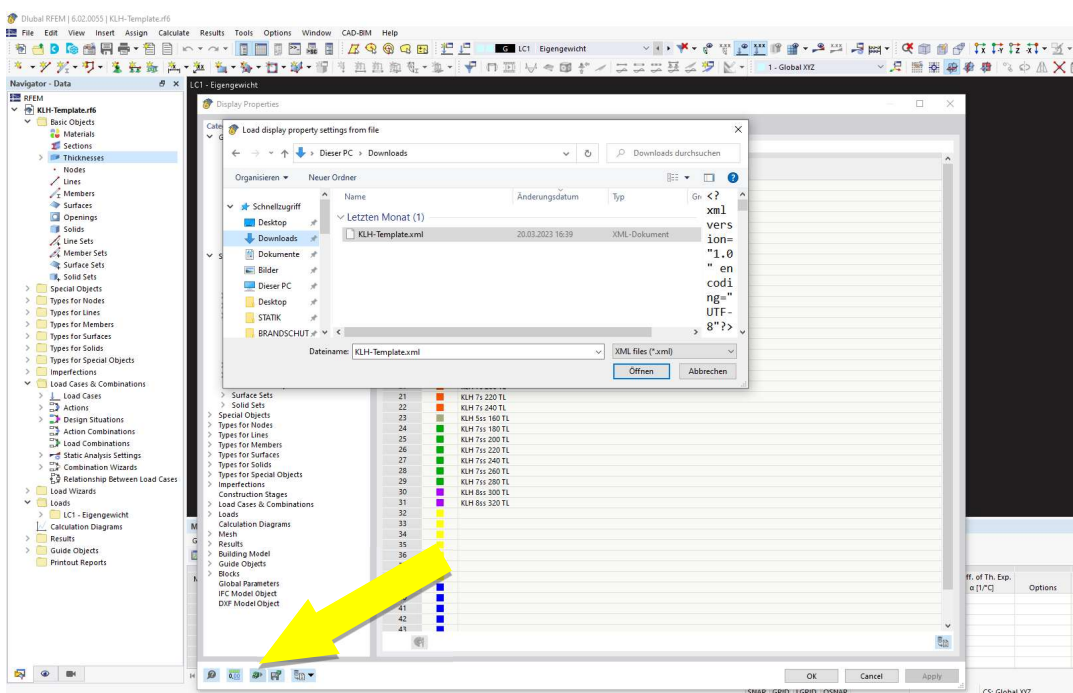
Step 2: Open the locally saved file KLH-Template.rf6 (available for download at <https://www.klh.at/software-tools/#klh-designer-2> → Structural Designer → Statics 3D → Dlubal RFEM → KLH Template)



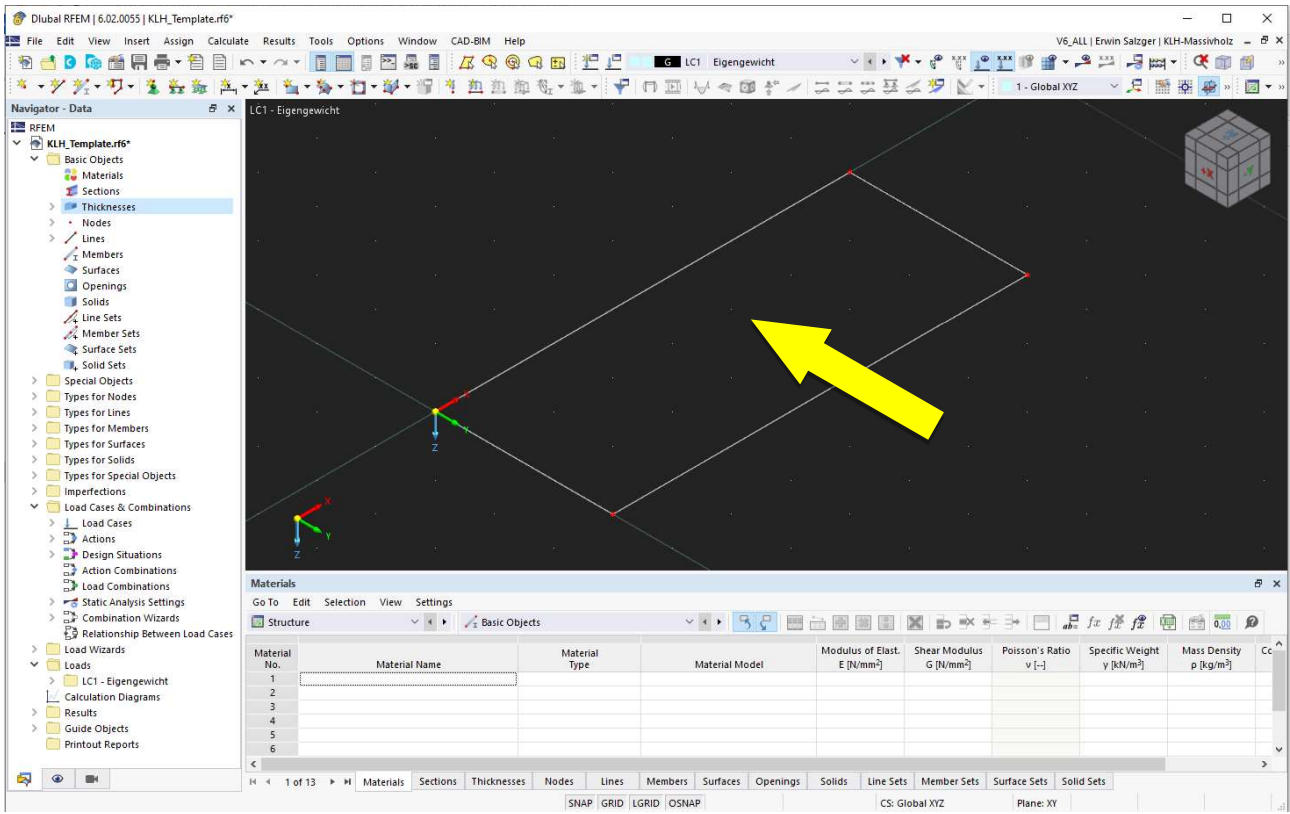
Step 3: Right-click on **Thickenesses** (under Basic Objects) and open Display Properties...



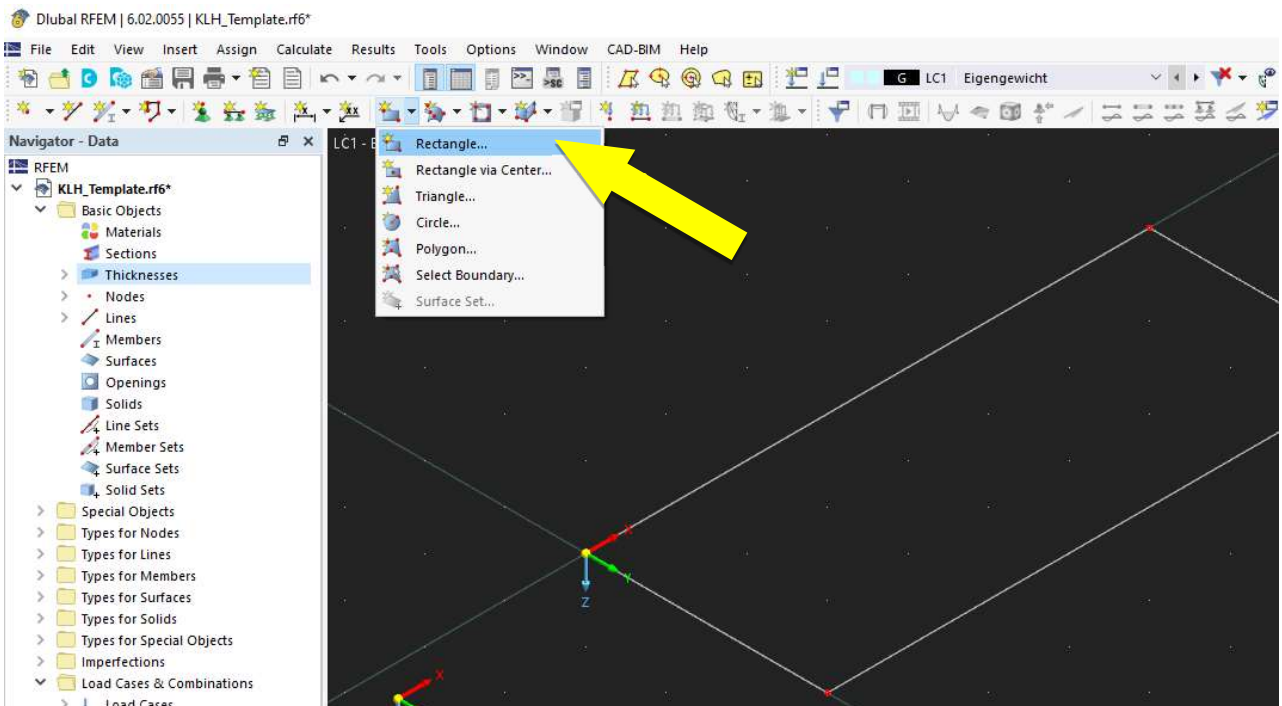
Step 4: Go to "Load from Template", select the file KLH-Template.xml (also available for download at <https://www.klh.at/software-tools/#klh-designer-2> → Structural Designer → Statics 3D → Dlubal RFEM → Farbcodierung) and select "Open" so that panel types with a similar structure are displayed in the same colour.



Step 5: Create a model in the template file "KLH-Template" in the usual way.



Step 6: Then create or edit a surface.



Step 7: A suitable panel type can be selected here under "Thickness with Material".

