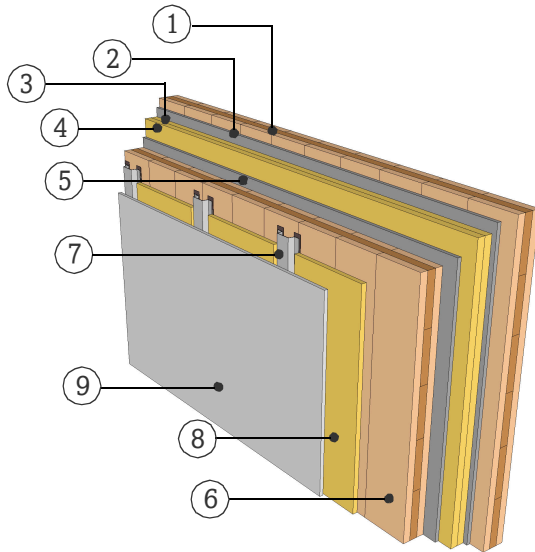


DATASHEET

PARTITION WALL

WTW16.05

TWO SEPARATE LAYER, FACING FORMWORK



FIRE RESISTANCE

Pre-dimensioning for fire attack on both sides

R*EI 30	> 3s 80 TT
R*EI 60	> 5s 100 TT
R*EI 90	> 5s 100 TT+12.5 Gt-F

*For residual load capacity or alternative design see <https://www.klhdesigner.at/>

SOUND INSULATION

R_w (C;C_{tr})	64 (-5;-12) [dB]
---	------------------

<https://www.klh.at/online-bauteilkatalog/>

THERMAL PROTECTION

U	0,26 [W/m²K]
m_{w,B,A}	29/36 [kg/m²]

MATERIAL

PROPERTIES

	[mm]		λ [W/mK]	μ min-max [-]	ρ [kg/m³]	c [kJ/kgK]	
①	100.0	TT, KLH solid timber slab	0.12	50 - 300	470	1.6	D
②	15.0	Cement bonded sandwich panel, Fermacell	0.4	40	1000	1	A1
③	30.0	Glasfiber with felt layer	0.032	1	40	0.81	A2
④	30.0	Glasfiber with felt layer	0.032	1	40	0.81	A2
⑤	15.0	Cement bonded sandwich panel, Fermacell	0.4	40	1000	1	A1
⑥	100.0	TT, KLH solid timber slab	0.12	50 - 300	470	1.6	D
⑦	20.0	Light weight profiles					A1
⑧	15.0	Impact sound insulation, mineral wool	0.036	1	70 - 150	0.84	A1
⑨	12.5	Gypsum fiberboard, Fermacell	0.32	13	1200	1.1	A1

Thickness 322,5 [mm]

Mass per squaremeter ca. 155 [kg/m²]

Test report sound: HFA 781a2016-BB
Calculation of the physical values by the
KLH Massivholz GmbH, without warranty