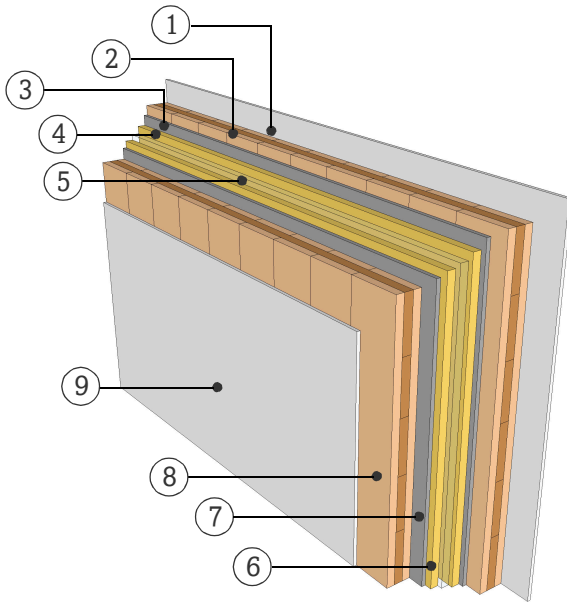


DATASHEET

PARTITION WALL

WTW16.03

TWO SEPARATE LAYER



FIRE RESISTANCE

Pre-dimensioning for fire attack on both sides

R*EI 30	> 3s 80 TT
R*EI 60	> 5s 100 TT
R*EI 90	> 5s 100 TT+12.5 Gt-F

*For residual load capacity or alternative design see <https://www.klhdesigner.at/>

SOUND INSULATION

$R_w (C;C_{tr})$ 65 (-2;-8) [dB]

<https://www.klh.at/en/online-component-catalogue/>

THERMAL PROTECTION

U 0,28 [W/m²K]

$m_{w,B,A}$ 38/38 [kg/m²]

MATERIAL

PROPERTIES

	[mm]	λ [W/mK]	μ min-max [-]	ρ [kg/m³]	c [kJ/kgK]	
①	12.5	0.25	10	680	0.96	A2
②	100.0	0.12	50 - 300	470	1.6	D
③	15.0	0.4	40	1000	1	A1
④	30.0	0.032	1	40	0.81	A2
⑤	10.0					
⑥	30.0	0.032	1	40	0.81	A2
⑦	15.0	0.4	40	1000	1	A1
⑧	100.0	0.12	50 - 300	470	1.6	D
⑨	12.5	0.25	10	680	0.96	A2

Thickness 325,0 [mm]

Mass per squaremeter ca. 150 [kg/m²]

Test report sound: HFA 781a2016-BB
Calculation of the physical values by the
KLH Massivholz GmbH, without warranty