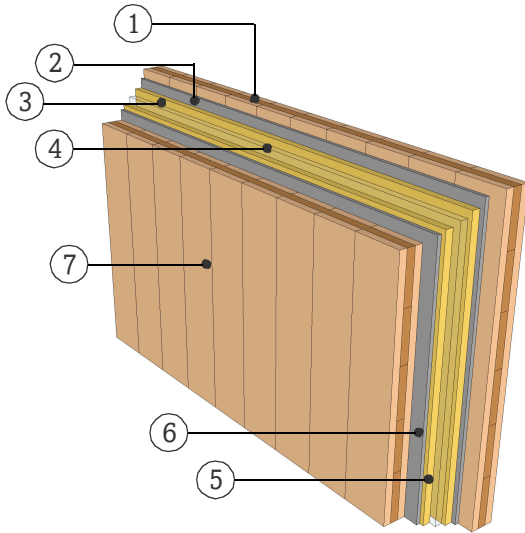


DATASHEET

PARTITION WALL

WTW16.02

TWO SEPARATE LAYER



FIRE RESISTANCE

Pre-dimensioning for fire attack on both sides

**R\*EI 30** > 3s 80 TT

**R\*EI 60** > 5s 100 TT

**R\*EI 90** > 5s 120 TT

\*For residual load capacity or alternative design see <https://www.klhdesigner.at/>

SOUND INSULATION

$R_w (C;C_{tr})$  66 (-4;-8) [dB]

<https://www.klh.at/online-bauteilkatalog/>

THERMAL PROTECTION

U 0,27 [W/m²K]

$m_{w,B,A}$  36/36 [kg/m²]

MATERIAL

PROPERTIES

	[mm]		$\lambda$ [W/mK]	$\mu$ min-max [-]	$\rho$ [kg/m³]	$c$ [kJ/kgK]	
①	100.0	TT, KLH solid timber slab	0.12	50 - 300	470	1.6	D
②	15.0	Cement bonded sandwich panel, Fermacell	0.4	40	1000	1	A1
③	30.0	Glasfiber with felt layer	0.032	1	40	0.81	A2
④	30.0	Air gap					
⑤	30.0	Glasfiber with felt layer	0.032	1	40	0.81	A2
⑥	15.0	Cement bonded sandwich panel, Fermacell	0.4	40	1000	1	A1
⑦	100.0	TT, KLH solid timber slab	0.12	50 - 300	470	1.6	D

Thickness 320,0 [mm]

Mass per squaremeter ca. 135 [kg/m²]

Test report sound: HFA 781a2016-BB  
Calculation of the physical values by the  
KLH Massivholz GmbH, without warranty