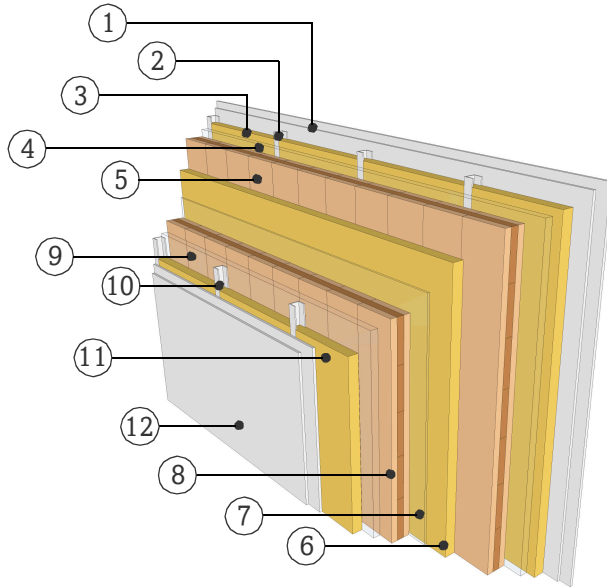


DATASHEET

PARTITION WALL

WTW12.08

TWO SEPARATE LAYER, FACING FORMWORK



FIRE RESISTANCE

Pre-dimensioning for fire attack on both sides

R*EI 30	> 3s 80 TT
R*EI 60	> 5s 100 TT
R*EI 90	> 5s 100 TT+12.5 Gt-F

*For residual load capacity or alternative design see <https://www.klhdesigner.at/>

SOUND INSULATION

R_w (C;C_{tr})	75 (-2;-7) [dB]
---	-----------------

<https://www.klh.at/online-bauteilkatalog/>

THERMAL PROTECTION

U	0,15 [W/m²K]
m_{w,B,A}	18/18 [kg/m²]

MATERIAL

PROPERTIES

[mm]		λ [W/mK]	μ min-max [-]	ρ [kg/m³]	c [kJ/kgK]	
①	25.0 Gypsum plasterboard	0.25	10	680	0.96	A2
②	50.0 Lightweight C-profiles					A1
③	50.0 Mineral wool, low density	0.04	1	15-30	1	A1
④	35.0 Air gap					
⑤	100.0 TT, KLH solid timber slab	0.12	50 - 300	470	1.6	D
⑥	50.0 Mineral wool, low density	0.04	1	15-30	1	A1
⑦	10.0 Air gap					
⑧	100.0 TT, KLH solid timber slab	0.12	50 - 300	470	1.6	D
⑨	35.0 Air gap					
⑩	50.0 Lightweight C-profiles					A1
⑪	50.0 Mineral wool, low density	0.04	1	15-30	1	A1
⑫	25.0 Gypsum plasterboard	0.25	10	680	0.96	A2

Thickness 480,0 [mm]

Mass per squaremeter ca. 135 [kg/m²]

Test report sound: HFA 1252/2012-BB
Calculation of the physical values by the
KLH Massivholz GmbH, without warranty