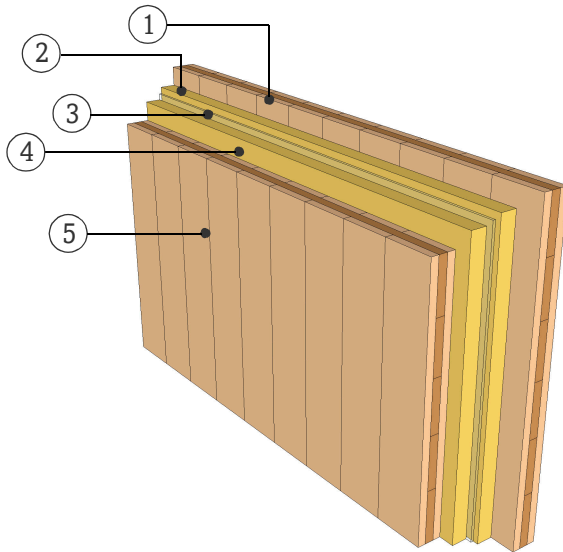


DATASHEET

PARTITION WALL

WTW03.01

TWO SEPARATE LAYER



FIRE RESISTANCE

Pre-dimensioning for fire attack on both sides

R*EI 30 > 3s 80 TT

R*EI 60 > 5s 100 TT

R*EI 90 > 5s 120 TT

*For residual load capacity or alternative design see <https://www.klhdesigner.at/>

SOUND INSULATION

R_w (C;C_{tr}) 64 (-3;-9) [dB]

<https://www.klh.at/en/online-component-catalogue/>

THERMAL PROTECTION

U 0,21 [W/m²K]

m_{w,B,A} 38/38 [kg/m²]

MATERIAL

PROPERTIES

| | [mm] | | λ [W/mK] | μ min-max [-] | ρ [kg/m ³] | c [kJ/kgK] | |
|---|------|---------------------------|---------------------|----------------------|--------------------------------|-----------------|----|
| ① | 80.0 | TT, KLH solid timber slab | 0.12 | 50 - 300 | 470 | 1.6 | D |
| ② | 60.0 | Mineral wool, low density | 0.04 | 1 | 15-30 | 1 | A1 |
| ③ | 10.0 | Air gap | | | | | |
| ④ | 60.0 | Mineral wool, low density | 0.04 | 1 | 15-30 | 1 | A1 |
| ⑤ | 80.0 | TT, KLH solid timber slab | 0.12 | 50 - 300 | 470 | 1.6 | D |

Thickness 290,0 [mm]

Mass per squaremeter ca. 95 [kg/m²]

Prüfbericht Schall: TU-Graz B03.851.010.320
Calculation of the physical values by the
KLH Massivholz GmbH, without warranty