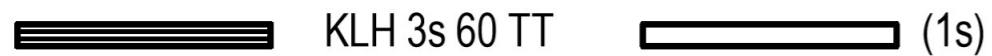


# KLH REVIT USER MANUAL

## Version with one layer and multilayer design

There are two versions of the KLH-panel design available, a one layer version (1s) and a multilayer (3s, 5s, 7s, etc.) version.



The one layer version is meant to be for draft and visual design, where the different layer arrangement has no optical relevance.

The multilayer version shows the actual layer thicknesses of the chosen panel. That can be vital for the constructional view of the massive timber parts.

## Walls

The file also contains two wall types for „up to 2.95 m height“ and for „above 2.95 m height“. That is based on the panel dimension limitation and the resulting change of panel orientation. Above the height of 2.95 m, the use of vertical TL-panels (top layer longitudinal) is necessary.

## Floors

The standard panel type for floor constructions are TL-panels. For some applications (span lengths of maximal 2.95 m) it can be better to use TT-panels (top layer transversal). A TL-panel is always suitable, but for optimization TT-panels can be more efficient.

## Insert KLH-components in Revit®

The KLH elements are offered as system families for AUTODESK® REVIT® 2017 and include components for walls, roofs and storey ceilings.

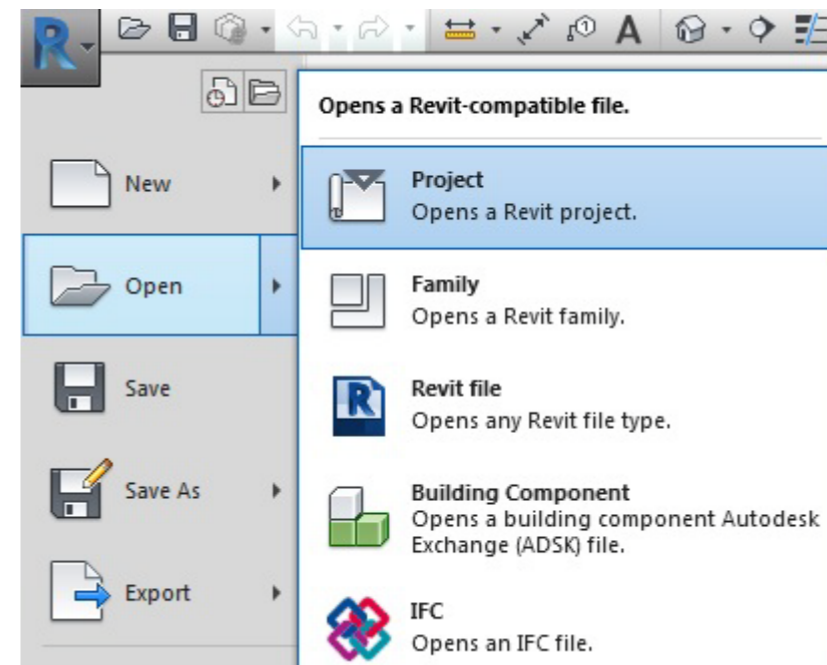
Although these components are system families, they can not be loaded into a project directly as you would normally be accustomed to REVIT® families.

Instead, the KLH components are stored in a REVIT® project and can be imported into your current project via a simple copy process.

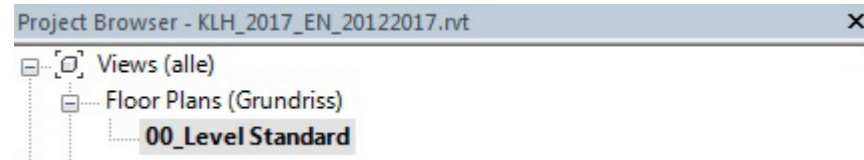
Proceed as follows:

### 1) Open the KLH master project.

Menu browser **R** > Open > Project.



2) In the <Projectbrowser> open the following path:  
Views | Ground plans | 00\_level general.



3) The components are now displayed in the drawing area.


	WALL up to 2.95m [TT]	WALL above 2.95m [TL]	CEILING [TL]	ROOF [TL]	CEILING max. 2.95m [TT]
3 Layers	6	6	6	6	6
	7	7	7	7	7
	8	8	8	8	8
5 Layers	10	10	10	10	10
	11	11	11	11	11
	12	12	12	12	12
	13	13	13	13	13
	14	14	14	14	14
7 Layers	15	15	15	15	15
	16	16	16	16	16
	17	17	17	17	17
	18	18	18	18	18
	20	20	20	20	20
	21	21	21	21	21
	22	22	22	22	22
8 Layers	23	23	23	23	23
	24	24	24	24	24
	25	25	25	25	25
	26	26	26	26	26
		27	27	27	
		28	28	28	
		30	30	30	
		32	32	32	

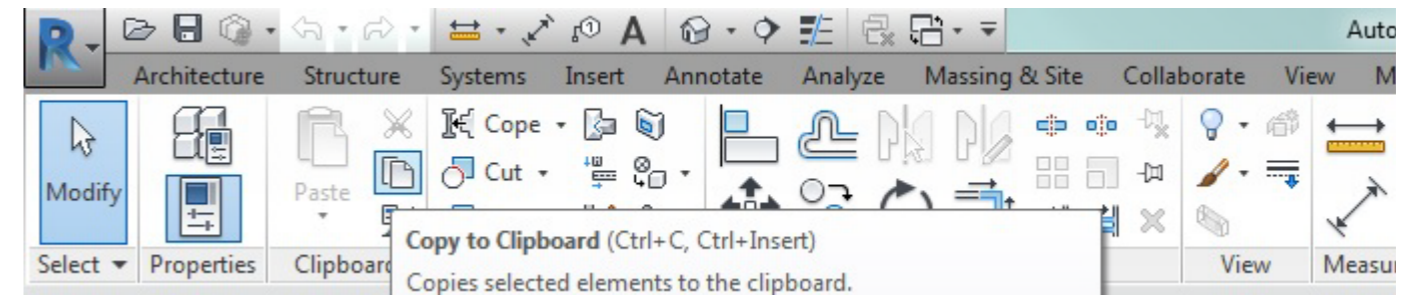
Please note that each component is offered in duplicate. The left components of a column are created as multilayer elements in Revit, whereas the right-hand elements are constructed in a single layer.

Both variants have the same type instance parameters, regardless of the type.

4) Select the desired components.


5) Copy the components to the clipboard.

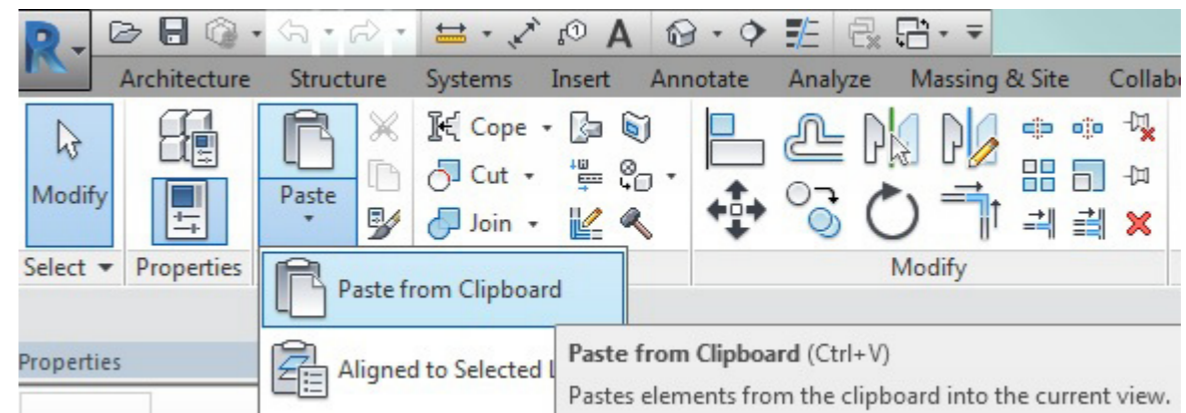
Change tab | <Element> > Group Clipboard > Copy   
Optionally use the keyboard commands: Strg+C or Ctrl+C.



6) Then change to your REVIT® project.

7) Insert the KLH components in a floor plan view.

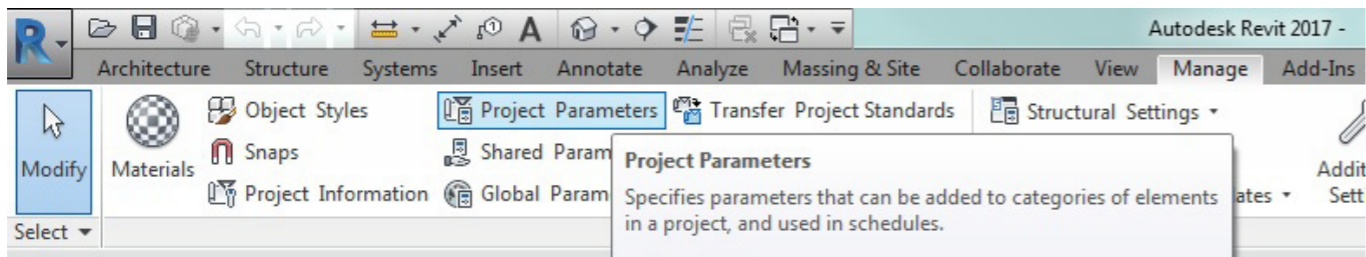
Change tab > Group Clipboard > Dropdown-List Paste  
> Paste from clipboard   
Optionally use the keyboard commands: Strg+V or Ctrl+V.



## Parameters of the KLH-components

If you want to see the project parameters of the KLH components, open them.

To do this, click the Manage tab ► Group settings ► Project parameters .



The KLH parameters can be easily identified by the prefix “KLH\_“.

