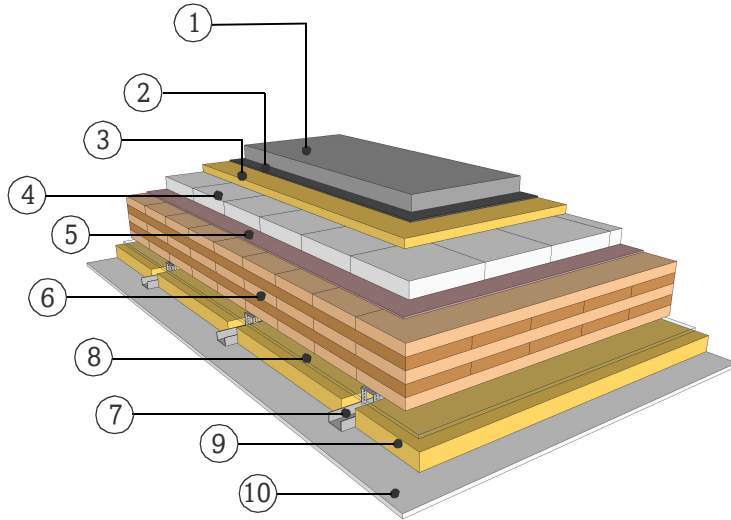


DATASHEET

COMPARTMENT FLOOR WITH CEMENT SCREED

GD15.01

SUSPENDED CEILING ON RESILIENT CLIPS



FIRE RESISTANCE

Pre-dimensioning one-sided fire attack

R*EI 30 > 3s 80 TL

R*EI 60 > 5s 120 TL

R*EI 90 > 5s 150 TL

*For residual load capacity or alternative design see <https://www.klhdesigner.at/>

SOUND INSULATION

R_w (C;C_{tr}) 75 (-2;-6) [dB]

L_{n,w} (C_i) 36 (5) [dB]

<https://www.klh.at/online-bauteilkatalog/>

THERMAL PROTECTION

U 0,26 [W/m²K]

m_{w,B,A} 15/106 [kg/m²]

MATERIAL

PROPERTIES

[mm]		λ [W/mK]	μ min-max [-]	ρ [kg/m ³]	c [kJ/kgK]	
①	60.0 Cement screed	1.4	50	2200	1.1	A1
②	Separating layer					
③	30.0 Impact sound insulation, s'≤ 7 MN/m ³	0.032	1	110	0.84	A1
④	50.0 Concrete elements	1.7	100	2400	1.08	A1
⑤	5.0 Acoustic sheet s'≤ 115 MN/m ³	0.045	20000	1400	1	E
⑥	150.0 TL, KLH solid timber slab	0.12	50 - 300	470	1.6	D
⑦	60.0 Light weight C-profiles on resilient clips					A1
⑧	10.0 Air gap					
⑨	50.0 Mineral wool, low density	0.04	1	15-30	1	A1
⑩	12.5 Gypsum fiberboard	0.25	10	1000	1.1	A2

Thickness 367,5 [mm]

Mass per squaremeter ca. 340 [kg/m²]

Test report sound: HFA 169/2015-BB
Calculation of the physical values by the
KLH Massivholz GmbH, without warranty