



KLH®

PROJECT

TIMBER LOFTS

LOCATION
Milwaukee,
USA

RESTAURATION AND NEW CONSTRUCTION

.....

The Timber Lofts project in Milwaukee combines the renovation of a five-story industrial building and the construction of a new four-story building. The first floor features a lobby, office, and fitness room, while luxury apartments have been created on the floors above. In total, the complex offers sixty residential units. Sustainability is a central focus of this project, leading to the reusing and adaptation of the 128-year-old building. This restoration allows for the utilization of existing materials and infrastructure, minimizing waste and reducing environmental impact in comparison to new construction. KLH® – CLT was selected for the floors and ceilings of the new part to minimize the carbon footprint. The exposed ceilings in the apartments and corridors create a harmonious link to the monumental edifice, which interacts seamlessly with the new construction on each floor.

The façade of the old building features Milwaukee's signature Cream City brick and a wooden framework inside. The rough, sooty look of the old building's brickwork served as inspiration for the design of the new building's façade, which is a dark, charcoal-colored one.

PROJECT INFO

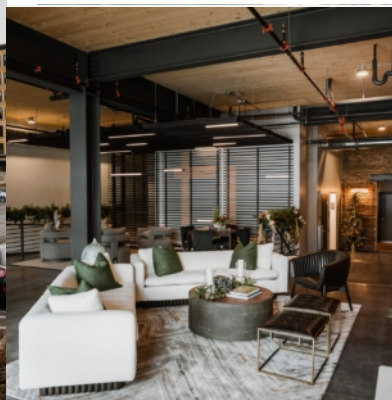
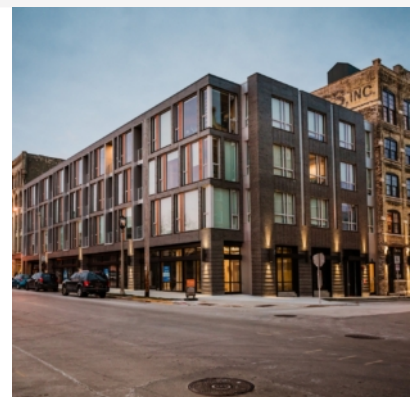
VOLUME OF KLH® – CLT

3.360 m² / 645 m³

STORED CARBON

491 tonnes (Regrowth time in Austria 11 minutes)

REFURBISHMENT & EXTENSIONS







ARCHITECTURE

Engberg Anderson Architects
www.engberganderson.com

CLIENT

Pieper Properties LLC
www.pieperproperties.com

ENGINEERING

Pierce Engineering
www.pierceengineering.com

PHOTOGRAPHY CREDITS

Roost Photography
 Engberg Anderson Architects

For further information [+43 \(0\) 3588 8835](tel:+43035888835) or office@klh.at