

**KLH®**

PROJECT

# EXTENSION FRANKFURT

LOCATION  
Frankfurt,  
Germany

## LARGE SCALE UPGRADING

.....

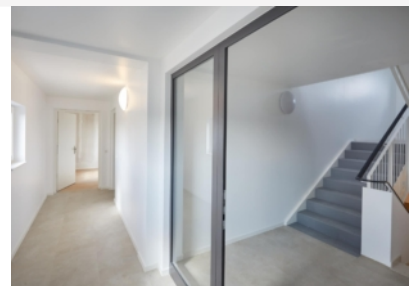
In just over a year, affordable housing was built on the roofs of a former barracks complex in Frankfurt: 380 apartments in just 15 months.

The residential area thus grew by 380 one- to three-bedroom apartments. The combination of social, student and privately financed housing mixes the neighbourhood and creates living space for around 900 residents. The simple three-story row buildings with gable roofs have been transformed into five-story buildings with a modern look thanks to a modular structure in timber construction.

The outstanding structural properties of wood as a building material and its low weight were key factors in this project. The high degree of prefabrication and production in the field factory allowed the residents to remain in their apartments throughout the construction phase, as this construction method reduces noise and pollution emissions to a minimum.

A total of approx. 100,000 m<sup>2</sup> of KLH® – CLT elements were installed within 13 months during the extension of the 19 row houses (each house 70 m × 9.5 m). More than 9,000 tons of CO<sub>2</sub> are permanently sequestered in the wood.

REFURBISHMENT &amp; EXTENSIONS



.....

**CLIENT**

ABG FRANKFURT HOLDING  
Wohnungsbau- und  
Beteiligungsgesellschaft mbH

.....

**ARCHITECTURE**

Stefan Forster GmbH  
[www.sfa.de](http://www.sfa.de)

.....

**GENERAL CONTRACTOR**

LiWood Holzmodulbau AG  
[www.liwood.com](http://www.liwood.com)

.....

**DELIVERY OF CLT**

ABA HOLZ van Kempen GmbH

.....

**CONSTRUCTION TIME**

December 2018 till spring 2020

.....

**PHOTOGRAPHY**

SKYKAMERA