

 KLH®

PROJECT

CIRERERS BUILDING

LOCATION
Barcelona,
SpainCOLLECTIV AND SOCIAL
LIVING SPACE

.....

The 26,5m high Cirerers building, built on a 428 m² publicly accessible plot of land, includes 8 floors, 32 cooperative apartments, large common areas and was constructed mainly of KLH® – CLT.

The goal of the project is a sustainable city where residents live communally and achieve positive environmental performance.

The apartment building was designed to allow a fusion of community and private. Communal spaces and outdoor areas are available to all residents, while private retreats meet individual needs. The building has a low energy demand and is self-sufficient in renewable energy, which improves its environmental performance. It stores more CO₂ than it emits during its existence and serves as an example of how architecture can help create a more sustainable future. Cirerers awarded in the sustainability category at the 2022 Advanced Architecture Awards.

The supporting structure on the first floor consists of columns, walls, wall-like beams and a concrete slab. The wooden structure of the remaining 7 floors is supported by the first floor slab made of reinforced concrete. Here, the timber structure consists of KLH® – CLT manufactured walls and floors.

PROJECT INFO

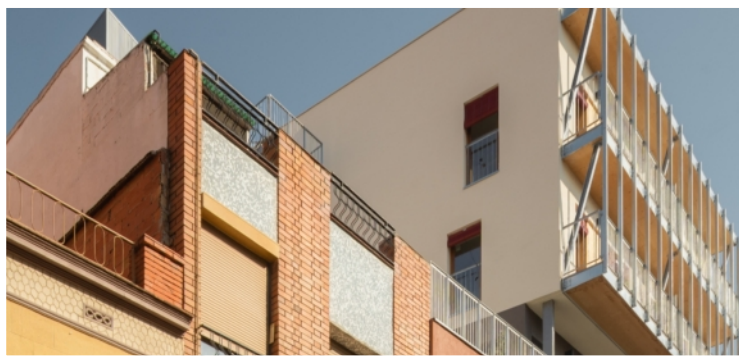
VOLUME OF KLH® – CLT
830m³ / 5.000m² (17 trucks)

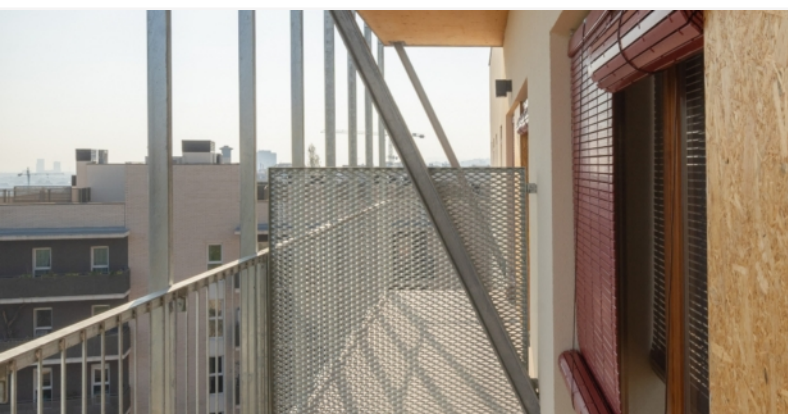
TIME PERIOD FOR KLH® – CLT DELIVERY
November – December 2020

STORED CARBON
660 tonnes (Regrowth time in Austria – 14 min)

AWARD
Advanced Architecture Awards 2022







CLIENT

Sostre Civic
www.sostrecivic.coop

STRUCTURE

Estudi M103
www.estudi-m103-slp.negotio.site

ARCHITECTURE

Celobert cooperativa
<https://celobert.coop/>

PHOTOGRAPHY

Guifré de Peray
 Joan Guillamat
 Joan Massagué | Celobert cooperativa

WOODWORK

Velima System sl
www.velimasystem.com