

# THE CHILDREN'S COURSE LEARNING CENTER

LOCATION  
Gladstone,  
USA

## A DISTINCT GABLE FORM

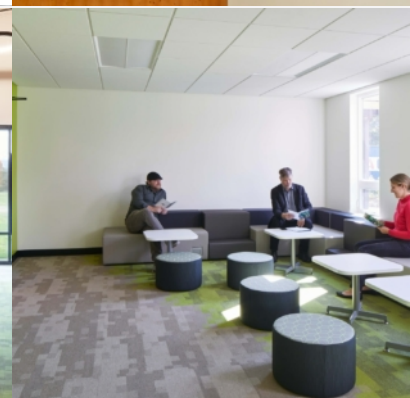
The existing building was a dilapidated single-story house that served many functions simultaneously (office, classrooms, sales room, etc.) and consequently only a limited number of children could participate in the program.

ORANGEWALLstudios was presented with the challenge of creating a facility that supported the program's mission and inspired community sponsors. In designing the new Learning Center for the Children's Course, cross-laminated timber (KLH® – CLT) was chosen as the primary structural and finish system.

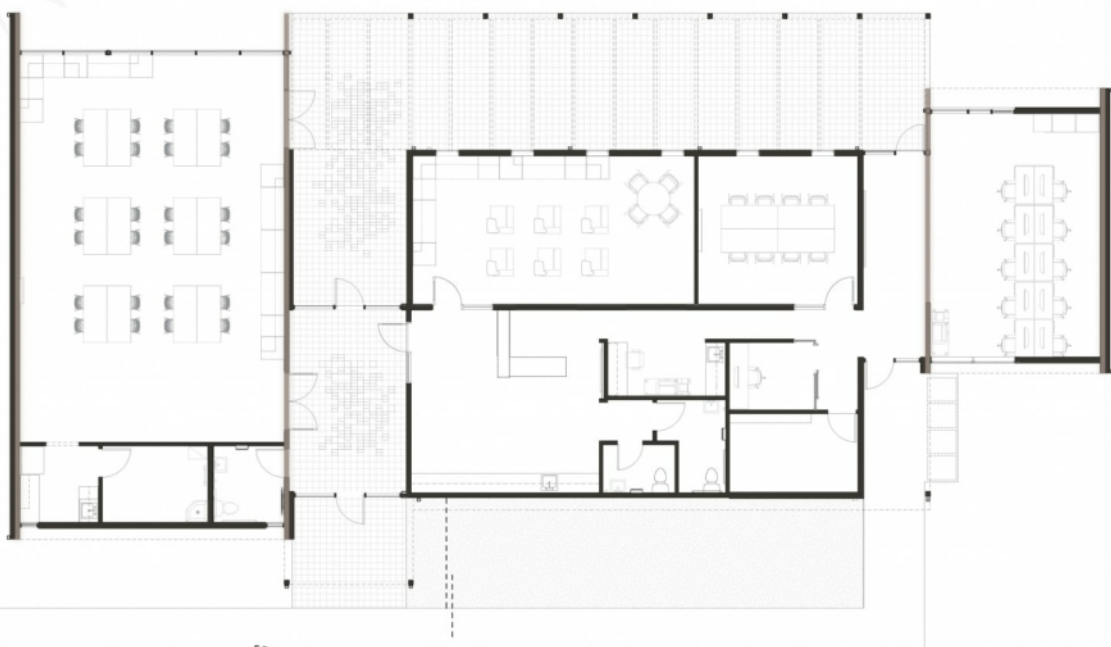
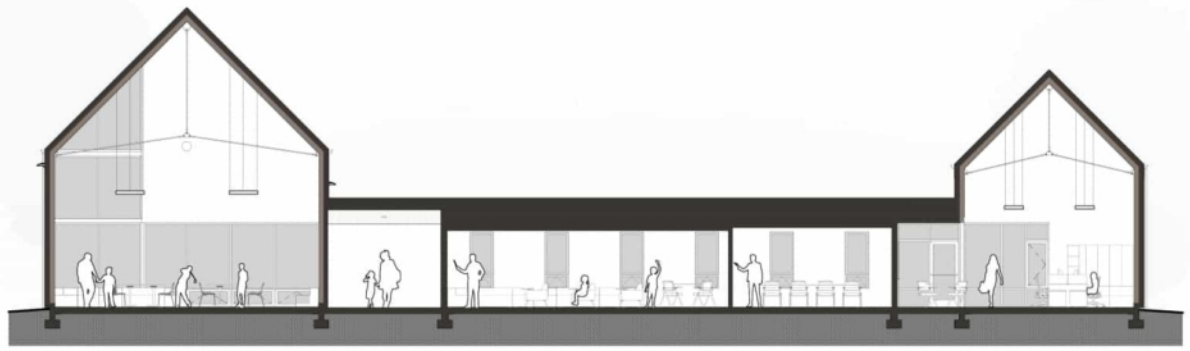
The gable forms of the two volumes were chosen for their structural capabilities and recognizable icon as a „house“. The distinct gable forms and exposed KLH® – CLT material on the interior created warm and light filled spaces.

Coordinated pre-construction planning of electrical and mechanical systems was performed ahead of fabrication. The ability to manufacture CLT panels in the factory accurately and assemble them quickly on site minimized the disruption to the adjacent neighbors and minimized the number of subcontractor vehicles traveling to and from the site. The project also used 3/4" (19 mm) veneer panels as soffit material in the entryway and the retail portion of the renovated existing building.

After a round of golf, one's gaze is drawn at the ninth hole to the smaller of the two CLT structures, which serves as an office for the employees. From the inside, one can look out over the whole golf course and the terrace to monitor activity.











.....  
**CLIENT**

The Children's Course

.....  
**ARCHITECTURE**

ORANGEWALLstudios  
[www.orangewallstudios.com](http://www.orangewallstudios.com)

.....  
**INSTALLATION**

Carpentry Plus

.....  
**PHOTOGRAPHY CREDITS**

Sally Painter Photo