

# 55 SOUTHBANK

## ADINA APARTMENT HOTEL

LOCATION  
Melbourne,  
Australia

### THE WORLD'S TALLEST MASS TIMBER VERTICAL EXTENSION

.....

In the heart of the Southbank precinct, on one of Melbourne's busiest intersections, a Cross Laminated Timber (CLT) building extension designed by architects Bates Smart was built. Completed early 2020, 55 Southbank delivers a 220-room serviced apartment complex run by Adina Hotels. The new extension seeks to echo and amplify the architectural expression of the existing building, more than doubling the current height.

This is a landmark project for CLT and mass timber construction for several reasons. It is the world's tallest mass timber vertical extension; a truly remarkable achievement. More importantly, being a lightweight building material – one fifth the weight of concrete – the utilisation of mass timber has been key to the overall feasibility of the project.

The existing building was originally designed to allow for an additional six-storey vertical extension using concrete framed construction. This structure, though, did not provide enough floor area and therefore apartments, to make the operating of the proposed apartment complex commercially viable. In contrast, the use of CLT enabled the extension to be pushed to 10 storeys, unlocking an additional four floors of serviced apartments, achieving the target number.

#### PROJECT INFO

BUILDING HEIGHT – 72 m

STOREYS – 17 (6 existing, 1 transfer and 10 CLT)

NUMBER OF CLT PANELS – 1.850 approx.

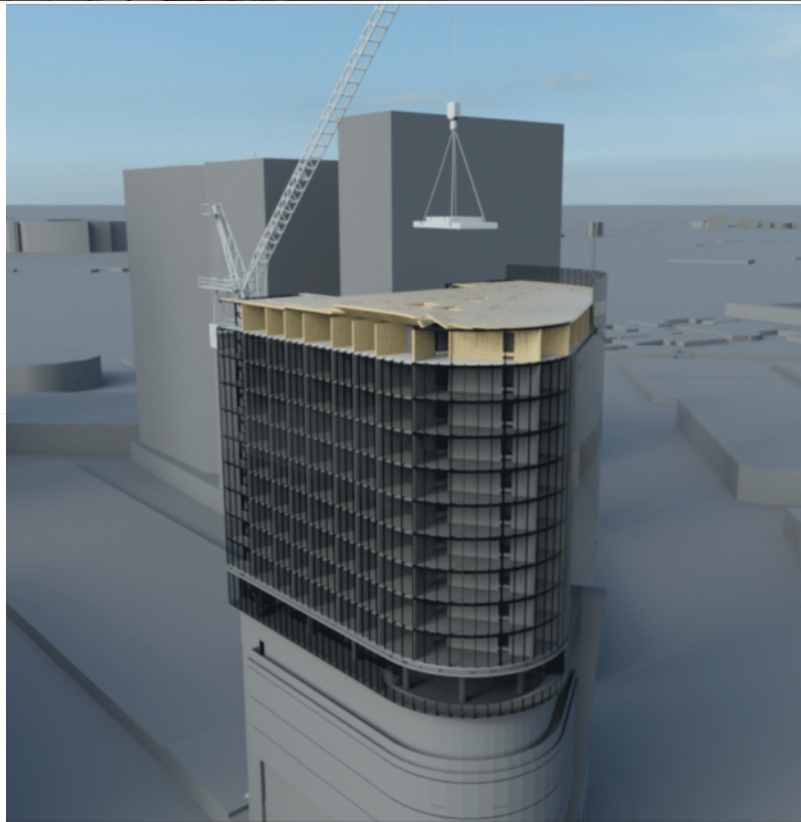
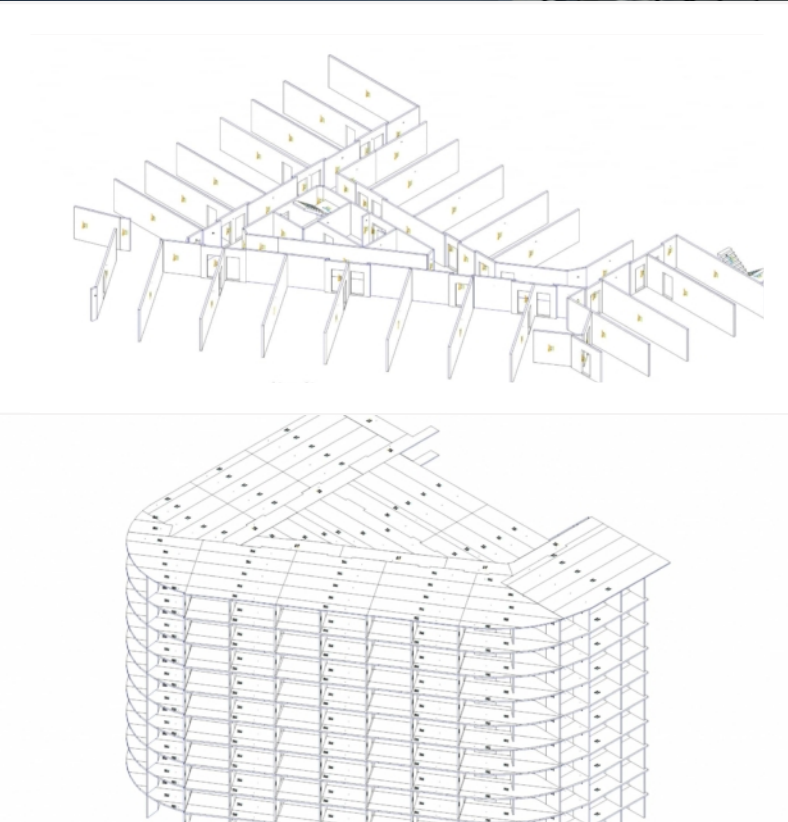
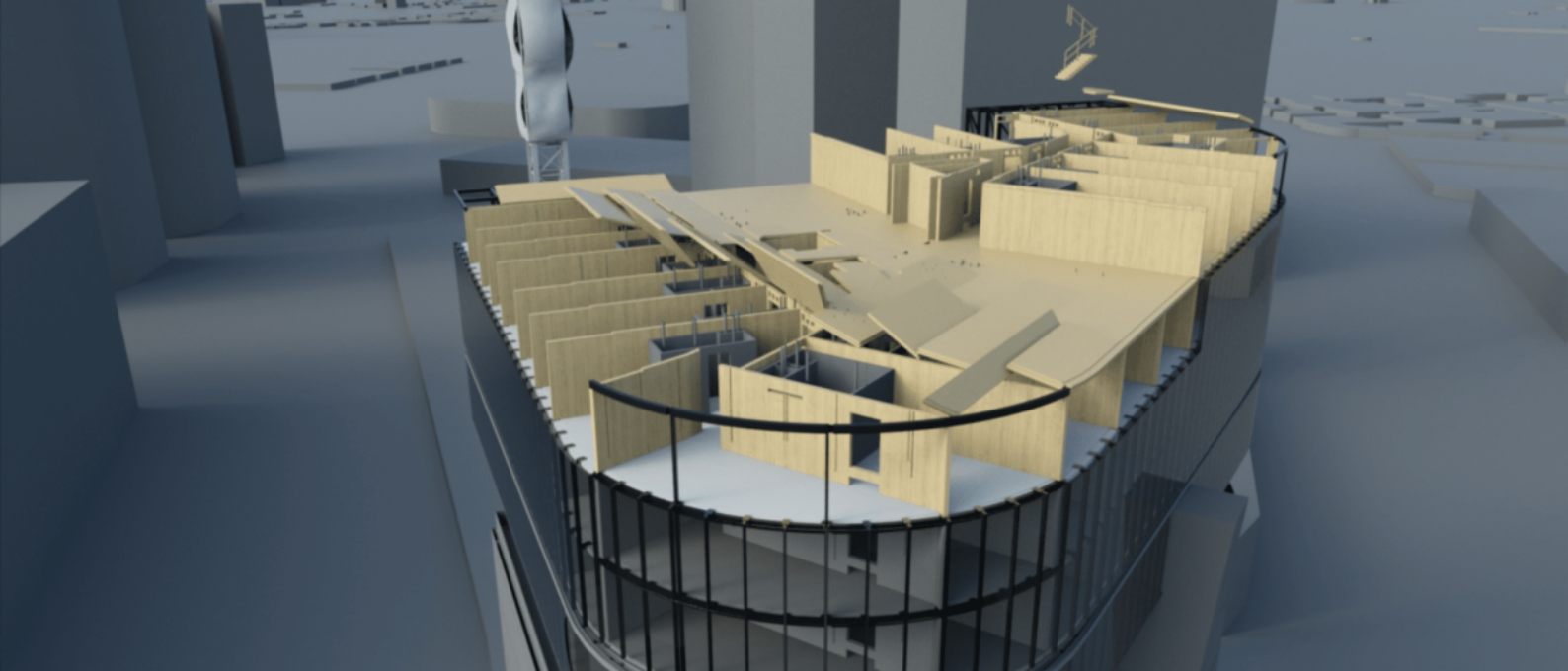
TONNES OF CLT – 1.730 approx.

CUMMULATIVE METRES OF CLT – 3.675 approx.

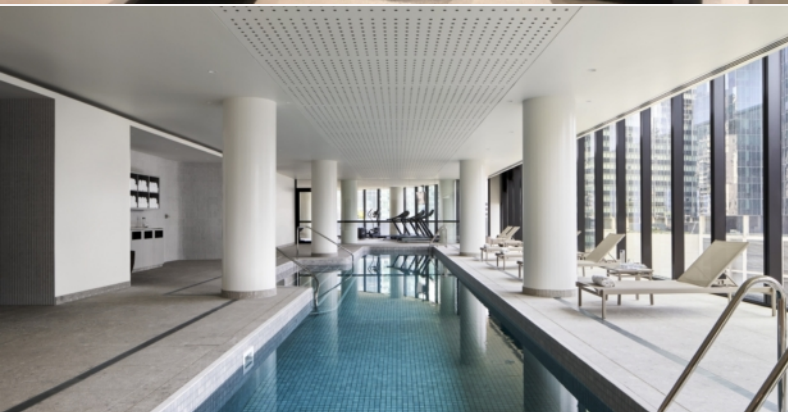
TONNES OF CO2 SEQUESTERED – 2.800 approx.











.....  
**CLIENT**

Hume Partners

.....  
**ARCHITECT**

Bates Smart  
[www.batessmart.com](http://www.batessmart.com)

.....  
**BUILDER**

Atelier Projects  
[www.atelierprojects.com.au](http://www.atelierprojects.com.au)

.....  
**MASS TIMBER ENGINEER**

Vistek  
[www.vistek.com.au](http://www.vistek.com.au)

.....  
**PHOTOGRAPHY**

Peter Clarke Photography  
Vistek | KLH®

For further information [+43 \(0\) 3588 8835](tel:+43035888835) or [office@klh.at](mailto:office@klh.at)