

## REFERENZLISTE BAUTEILE

Bei den Bauteilverbesserungen handelt es sich um berechnete Erweiterungen für eine Auswahl an verfügbaren bzw. (und) geprüften Aufbauten.

Die geprüften Aufbauten sind:

- **Größtenteils im online Bauteilkatalog abrufbar**
- **Teilweise mit KLH internen Prüfprotokollen abgelegt**
- **Teilweise mit dataholz Aufbauten abgeglichen**

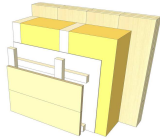
In dieser Liste sind alle online verfügbaren Einträge vermerkt, alle KLH internen Messungen und Berichte benannt, um eine rasche Datenprüfung zu ermöglichen.

Stand der Referenzen ist der 13.07.2023

# AW

## Hinterlüftete Holzfassade

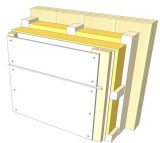
AW 01



AW 01 S	AW12.01	<a href="https://www.klh.at/wp-content/uploads/2019/12/aw1201-de.pdf">https://www.klh.at/wp-content/uploads/2019/12/aw1201-de.pdf</a>
	dataholz	<a href="https://www.dataholz.eu/bauteile/aussenwand/detail/kz/awmoho05a.htm">https://www.dataholz.eu/bauteile/aussenwand/detail/kz/awmoho05a.htm</a>
AW 01 G	AW13.04	<a href="https://www.klh.at/wp-content/uploads/2019/12/aw1304-de.pdf">https://www.klh.at/wp-content/uploads/2019/12/aw1304-de.pdf</a>
	dataholz	<a href="https://www.dataholz.eu/bauteile/aussenwand/detail/kz/awmoho05a.htm">https://www.dataholz.eu/bauteile/aussenwand/detail/kz/awmoho05a.htm</a>
AW 01 FS	AW13.02	<a href="https://www.klh.at/wp-content/uploads/2019/12/aw1201-de.pdf">https://www.klh.at/wp-content/uploads/2019/12/aw1201-de.pdf</a>
AW 01 VS	dataholz	<a href="https://www.dataholz.eu/bauteile/aussenwand/detail/kz/awmhhi03a.htm">https://www.dataholz.eu/bauteile/aussenwand/detail/kz/awmhhi03a.htm</a>
AW 01 VS2	dataholz	<a href="https://www.dataholz.eu/bauteile/aussenwand/detail/kz/awmhhi03b.htm">https://www.dataholz.eu/bauteile/aussenwand/detail/kz/awmhhi03b.htm</a>

## Hinterlüftete Fassadenplatte

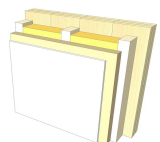
AW 02



AW 02 S	AW14.05	<a href="https://www.klh.at/wp-content/uploads/2019/12/aw1405-de.pdf">https://www.klh.at/wp-content/uploads/2019/12/aw1405-de.pdf</a>
AW 02 G		
AW 02 FS		
AW 02 VS		
AW 02 VS2		

## Putzträgerplatte

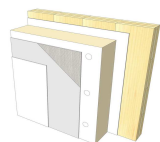
AW 03



AW 03 S	AW18.03	<a href="https://www.klh.at/wp-content/uploads/2019/12/aw1803-de.pdf">https://www.klh.at/wp-content/uploads/2019/12/aw1803-de.pdf</a>
AW 03 G		
AW 03 FS		
AW 03 VS		
AW 03 VS2		

## WDVS - EPS

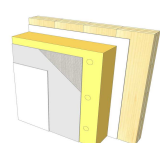
AW 04



AW 04 S	KLH intern	Messprotokoll WAA 2013 WDVS
AW 04 G		
AW 04 FS	AW10.04	<a href="https://www.klh.at/wp-content/uploads/2019/12/aw1004-de.pdf">https://www.klh.at/wp-content/uploads/2019/12/aw1004-de.pdf</a>
AW 04 VS	AW12.05	<a href="https://www.klh.at/wp-content/uploads/2019/12/aw1205-de.pdf">https://www.klh.at/wp-content/uploads/2019/12/aw1205-de.pdf</a>
AW 04 VS2		

## WDVS - Mineralwolle

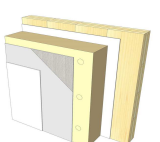
AW 05



AW 05 S	KLH intern	Messprotokoll WAA 2013 WDVS
AW 05 G		
AW 05 FS		
AW 05 VS	AW15.01	<a href="https://www.klh.at/wp-content/uploads/2019/12/aw1501-de.pdf">https://www.klh.at/wp-content/uploads/2019/12/aw1501-de.pdf</a>
AW 05 VS2		

## WDVS - Holzfaser

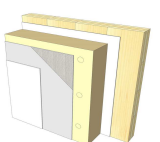
AW 06



AW 06 S	dataholz	<a href="https://www.dataholz.eu/bauteile/aussenwand/variante/kz/awmopo01a/nr/5.htm">https://www.dataholz.eu/bauteile/aussenwand/variante/kz/awmopo01a/nr/5.htm</a>
AW 06 G	dataholz	<a href="https://www.dataholz.eu/bauteile/aussenwand/variante/kz/awmopo01a/nr/7.htm">https://www.dataholz.eu/bauteile/aussenwand/variante/kz/awmopo01a/nr/7.htm</a>
AW 06 FS	AW14.07	<a href="https://www.klh.at/wp-content/uploads/2019/12/aw1407a-de.pdf">https://www.klh.at/wp-content/uploads/2019/12/aw1407a-de.pdf</a>
AW 06 VS		
AW 06 VS2		

## WDVS - Hanf

AW 07



AW 07 S	AW14.01	<a href="https://www.klh.at/wp-content/uploads/2019/12/aw1401-de.pdf">https://www.klh.at/wp-content/uploads/2019/12/aw1401-de.pdf</a>
AW 07 G	AW14.02	<a href="https://www.klh.at/wp-content/uploads/2019/12/aw1402-de.pdf">https://www.klh.at/wp-content/uploads/2019/12/aw1402-de.pdf</a>
AW 07 FS		
AW 07 VS		
AW 07 VS2	AW14.04	<a href="https://www.klh.at/wp-content/uploads/2019/12/aw1404-de.pdf">https://www.klh.at/wp-content/uploads/2019/12/aw1404-de.pdf</a>

# IW

## KLH 3s 60

IW 01



IW 01 S	KLH18.01	<a href="https://www.klh.at/wp-content/uploads/2019/12/klh1801-de.pdf">https://www.klh.at/wp-content/uploads/2019/12/klh1801-de.pdf</a>
IW 01 G		
IW 01 FS		
IW 01 VS		
IW 01 VS2		

## KLH 3s 100

IW 02



IW 02 S	KLH12.02	<a href="https://www.klh.at/wp-content/uploads/2019/12/klh1202-de.pdf">https://www.klh.at/wp-content/uploads/2019/12/klh1202-de.pdf</a>
IW 02 G		
IW 02 FS	IW18.02	<a href="https://www.klh.at/wp-content/uploads/2019/12/iw1801-de.pdf">https://www.klh.at/wp-content/uploads/2019/12/iw1801-de.pdf</a>
IW 02 VS		
IW 02 VS2		

## KLH 5s 160

IW 03



IW 03 S	KLH12.04	<a href="https://www.klh.at/wp-content/uploads/2019/12/klh1204-de.pdf">https://www.klh.at/wp-content/uploads/2019/12/klh1204-de.pdf</a>
IW 03 G		
IW 03 FS		
IW 03 VS		
IW 03 VS2		

## Bepunkt

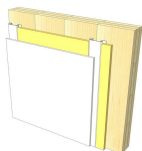
IW 04



IW 04 S	IW12.07	<a href="https://www.klh.at/wp-content/uploads/2019/12/iw1207-de.pdf">https://www.klh.at/wp-content/uploads/2019/12/iw1207-de.pdf</a>
IW 04 G		
IW 04 FS	IW18.02	<a href="https://www.klh.at/wp-content/uploads/2019/12/iw1801-de.pdf">https://www.klh.at/wp-content/uploads/2019/12/iw1801-de.pdf</a>
IW 04 VS		
IW 04 VS2		

## Vorsatzschale Federschiene

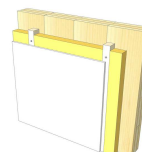
IW 05



IW 05 S	IW18.02	<a href="https://www.klh.at/wp-content/uploads/2019/12/iw1801-de.pdf">https://www.klh.at/wp-content/uploads/2019/12/iw1801-de.pdf</a>
IW 05 G		
IW 05 FS		
IW 05 VS		
IW 05 VS2		

## Vorsatzschale Holzlattung

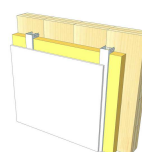
IW 06



IW 06 S	KLH intern	Messprotokoll WAA 2022 Holzlattung dataholz <a href="https://www.dataholz.eu/bauteile/innenwand/variante/kz/iwmxxo02a.htm">https://www.dataholz.eu/bauteile/innenwand/variante/kz/iwmxxo02a.htm</a>
IW 06 G		
IW 06 FS		
IW 06 VS		
IW 06 VS2		

## Vorsatzschale C-Profil

IW 07

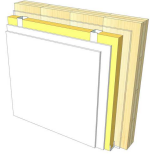


IW 07 S	IW15.01	<a href="https://www.klh.at/wp-content/uploads/2019/12/iw1501-de.pdf">https://www.klh.at/wp-content/uploads/2019/12/iw1501-de.pdf</a>
IW 07 G		
IW 07 FS	KLH intern	Messprotokoll WAA 2022 Federschiene
IW 07 VS	IW14.02	<a href="https://www.klh.at/wp-content/uploads/2019/12/iw1402-de.pdf">https://www.klh.at/wp-content/uploads/2019/12/iw1402-de.pdf</a>
IW 07 VS2		

# IW

## Vorsatzschale freistehend

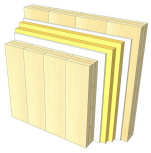
IW 08



IW 08 S	IW12.02	<a href="https://www.klh.at/wp-content/uploads/2019/12/iw1202-de.pdf">https://www.klh.at/wp-content/uploads/2019/12/iw1202-de.pdf</a>
IW 08 G		
IW 08 FS	KLH intern	Messprotokoll WAA 2022 Federschiene
IW 08 VS		
IW 08 VS2	IW12.06	<a href="https://www.klh.at/wp-content/uploads/2019/12/iw1206-de.pdf">https://www.klh.at/wp-content/uploads/2019/12/iw1206-de.pdf</a>

## Zweischalig KLH 3s 100

IW 09

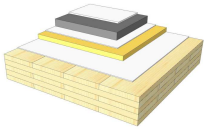


IW 09 S	WTW16.02	<a href="https://www.klh.at/wp-content/uploads/2019/12/wtw1602-de.pdf">https://www.klh.at/wp-content/uploads/2019/12/wtw1602-de.pdf</a>
	WTW05.01	<a href="https://www.klh.at/wp-content/uploads/2019/12/wtw0501-de.pdf">https://www.klh.at/wp-content/uploads/2019/12/wtw0501-de.pdf</a>
IW 09 G	WTW16.03	<a href="https://www.klh.at/wp-content/uploads/2019/12/wtw1603-de.pdf">https://www.klh.at/wp-content/uploads/2019/12/wtw1603-de.pdf</a>
IW 09 FS	WTW16.06	<a href="https://www.klh.at/wp-content/uploads/2019/12/wtw1606-de.pdf">https://www.klh.at/wp-content/uploads/2019/12/wtw1606-de.pdf</a>
IW 09 VS		
IW 09 VS2	WTW12.05	<a href="https://www.klh.at/wp-content/uploads/2019/12/wtw1205-de.pdf">https://www.klh.at/wp-content/uploads/2019/12/wtw1205-de.pdf</a>

# GD

## Nassestrich / ohne od. leichte Schüttung

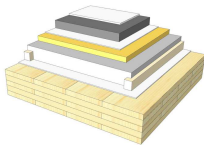
GD 01



GD 01 S	KLH intern	Messprotokoll WAA Kontrolldecke
GD 01 G		
GD 01 FS		
GD 01 UD	GD07.01	<a href="https://www.klh.at/wp-content/uploads/2019/12/gd0701-de.pdf">https://www.klh.at/wp-content/uploads/2019/12/gd0701-de.pdf</a>
	GD14.09	<a href="https://www.klh.at/wp-content/uploads/2019/12/gd1409-de.pdf">https://www.klh.at/wp-content/uploads/2019/12/gd1409-de.pdf</a>
GD 01 UD2	GD14.08	<a href="https://www.klh.at/wp-content/uploads/2019/12/gd1408-de.pdf">https://www.klh.at/wp-content/uploads/2019/12/gd1408-de.pdf</a>

## Nassestrich / Schüttung schwer (lose od. Einleger)

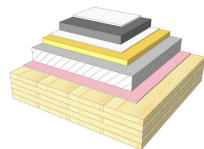
GD 02



GD 02 S	GD06.02	<a href="https://www.klh.at/wp-content/uploads/2019/12/gd0602-de.pdf">https://www.klh.at/wp-content/uploads/2019/12/gd0602-de.pdf</a>
	GD08.03	<a href="https://www.klh.at/wp-content/uploads/2019/12/gd0803-de.pdf">https://www.klh.at/wp-content/uploads/2019/12/gd0803-de.pdf</a>
GD 02 G		
GD 02 FS		
GD 02 UD	GD06.03	<a href="https://www.klh.at/wp-content/uploads/2019/12/gd0603-de.pdf">https://www.klh.at/wp-content/uploads/2019/12/gd0603-de.pdf</a>
	KLH intern	IBTS Prüfbericht 2021
GD 02 UD2	GD08.02	<a href="https://www.klh.at/wp-content/uploads/2019/12/gd0802-de.pdf">https://www.klh.at/wp-content/uploads/2019/12/gd0802-de.pdf</a>

## Nassestrich / geb. Schüttung schwer (elastisch od. Akustikbahn)

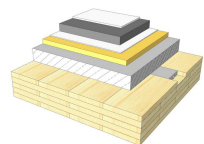
GD 03



GD 03 S	GD06.01	<a href="https://www.klh.at/wp-content/uploads/2019/12/gd0601-de.pdf">https://www.klh.at/wp-content/uploads/2019/12/gd0601-de.pdf</a>
	GD15.02	<a href="https://www.klh.at/wp-content/uploads/2019/12/gd1502-de.pdf">https://www.klh.at/wp-content/uploads/2019/12/gd1502-de.pdf</a>
	GD18.02	<a href="https://www.klh.at/wp-content/uploads/2019/12/gd1802-de.pdf">https://www.klh.at/wp-content/uploads/2019/12/gd1802-de.pdf</a>
GD 03 G		
GD 03 FS		
GD 03 UD	GD15.01	<a href="https://www.klh.at/wp-content/uploads/2019/12/gd1501-de.pdf">https://www.klh.at/wp-content/uploads/2019/12/gd1501-de.pdf</a>
	GD18.01	<a href="https://www.klh.at/wp-content/uploads/2019/12/gd1801-de.pdf">https://www.klh.at/wp-content/uploads/2019/12/gd1801-de.pdf</a>
GD 03 UD2		

## Nassestrich / HBV / keine Schüttung

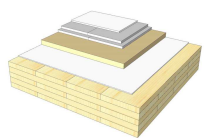
GD 04



GD 04 S	KLH intern	Messprotokoll WAA 2021 HBV
GD 04 G		
GD 04 FS		
GD 04 UD		
GD 04 UD2		

## Trockenestrich / ohne od. leichte Schüttung

GD 05

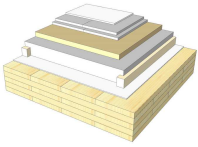


GD 05 S	Bericht	MA Kersten Johann
GD 05 G		
GD 05 FS		
GD 05 UD	GD14.07	<a href="https://www.klh.at/wp-content/uploads/2019/12/gd1407-de.pdf">https://www.klh.at/wp-content/uploads/2019/12/gd1407-de.pdf</a>
	dataholz	<a href="https://www.dataholz.eu/bauteile/geschossdecke/variante/kz/gdmtxa01a/nr/2.htm">https://www.dataholz.eu/bauteile/geschossdecke/variante/kz/gdmtxa01a/nr/2.htm</a>
GD 05 UD2	GD14.06	<a href="https://www.klh.at/wp-content/uploads/2019/12/gd1406-de.pdf">https://www.klh.at/wp-content/uploads/2019/12/gd1406-de.pdf</a>
	dataholz	<a href="https://www.dataholz.eu/bauteile/geschossdecke/variante/kz/tdmtxa01b/nr/3.htm">https://www.dataholz.eu/bauteile/geschossdecke/variante/kz/tdmtxa01b/nr/3.htm</a>

# GD

## Trockenestrich / Schüttung schwer

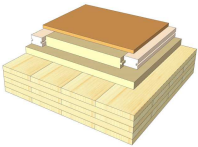
GD 06



GD 06 S	Bericht	HFA Messreihe 2008 (Prüfbericht_2151/2008/1-BG)
	dataholz	<a href="https://www.dataholz.eu/bauteile/geschossdecke/variante/kz/gdmtxn01.htm">https://www.dataholz.eu/bauteile/geschossdecke/variante/kz/gdmtxn01.htm</a>
GD 06 G		
GD 06 FS		
GD 06 UD		
GD 06 UD2	GD08.01	<a href="https://www.klh.at/wp-content/uploads/2019/12/gd0801-de.pdf">https://www.klh.at/wp-content/uploads/2019/12/gd0801-de.pdf</a>
	dataholz	<a href="https://www.dataholz.eu/bauteile/geschossdecke/variante/kz/tdmtxa01b/nr/2.htm">https://www.dataholz.eu/bauteile/geschossdecke/variante/kz/tdmtxa01b/nr/2.htm</a>

## Holzdielen / HF-System

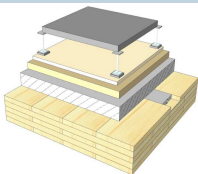
GD 07



GD 07 S	GD14.04	<a href="https://www.klh.at/wp-content/uploads/2019/12/gd1404-de.pdf">https://www.klh.at/wp-content/uploads/2019/12/gd1404-de.pdf</a>
GD 07 G		
GD 07 FS		
GD 07 UD		
GD 07 UD2	GD14.05	<a href="https://www.klh.at/wp-content/uploads/2019/12/gd1405-de.pdf">https://www.klh.at/wp-content/uploads/2019/12/gd1405-de.pdf</a>

## Doppelboden / HBV

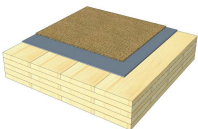
GD 08



GD 08 S	KLH intern	Messprotokoll WAA 2015/2021 Doppelboden
GD 08 G		
GD 08 FS		
GD 08 UD		
GD 08 UD2		

## Teppichboden

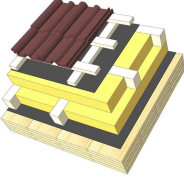
GD 09



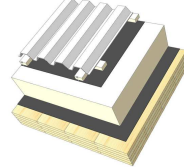
GD 09 S	Bericht	2018 / Verbesserung Trittschalldämmung / P. Brandstätter, Fraunhofer IBP
GD 09 G		
GD 09 FS		
GD 09 UD		
GD 09 UD2		

# DA

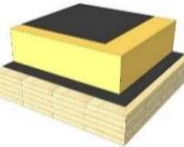
## Steildach / Ziegel

DA 01		DA 01 S	STD12.02	<a href="https://www.klh.at/wp-content/uploads/2019/12/std1202-de.pdf">https://www.klh.at/wp-content/uploads/2019/12/std1202-de.pdf</a>
			STD12.03	<a href="https://www.klh.at/wp-content/uploads/2019/12/std1203-de.pdf">https://www.klh.at/wp-content/uploads/2019/12/std1203-de.pdf</a>
		DA 01 G		
		DA 01 FS		
		DA 01 UD		
		DA 01 UD2	STD12.05	<a href="https://www.klh.at/wp-content/uploads/2019/12/std1205-de.pdf">https://www.klh.at/wp-content/uploads/2019/12/std1205-de.pdf</a>

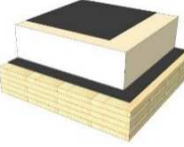
## Steildach / Blech

DA 02		DA 02 S	STD12.01	<a href="https://www.klh.at/wp-content/uploads/2019/12/std1201-de.pdf">https://www.klh.at/wp-content/uploads/2019/12/std1201-de.pdf</a>
		DA 02 G		
		DA 02 FS		
		DA 02 UD		
		DA 02 UD2	STD12.06	<a href="https://www.klh.at/wp-content/uploads/2019/12/std1206-de.pdf">https://www.klh.at/wp-content/uploads/2019/12/std1206-de.pdf</a>

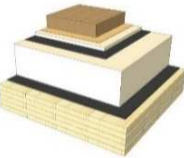
## Flachdach / Mineralwolle (od. Holzfaser)

DA 03		DA 03 S	FD01.01	<a href="https://www.klh.at/wp-content/uploads/2019/12/fd0101-de-1.pdf">https://www.klh.at/wp-content/uploads/2019/12/fd0101-de-1.pdf</a>
			dataholz	<a href="https://www.dataholz.eu/bauteile/flachdach-flachgeneigtes-dach/variante/kz/fdmnko01/nr/2.htm">https://www.dataholz.eu/bauteile/flachdach-flachgeneigtes-dach/variante/kz/fdmnko01/nr/2.htm</a>
		DA 03 G		
		DA 03 FS		
		DA 03 UD		
		DA 03 UD2		

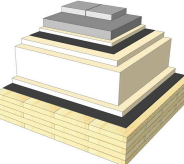
## Flachdach / EPS

DA 04		DA 04 S	KLH intern	Messprotokoll WAA 2017 Dachterrasse
		DA 04 G		
		DA 04 FS		
		DA 04 UD	dataholz	<a href="https://www.dataholz.eu/bauteile/flachdach-flachgeneigtes-dach/variante/kz/fdmbi01a/nr/1.htm">https://www.dataholz.eu/bauteile/flachdach-flachgeneigtes-dach/variante/kz/fdmbi01a/nr/1.htm</a>
		DA 04 UD2	FD15.01	<a href="https://www.klh.at/wp-content/uploads/2019/12/fd1501-de.pdf">https://www.klh.at/wp-content/uploads/2019/12/fd1501-de.pdf</a>
			KLH intern	Messprotokoll WAA 2017 Dachterrasse

## Flachdach / Begrünt

DA 05		DA 05 S	FD09.01	<a href="https://www.klh.at/wp-content/uploads/2019/12/fd0901-de.pdf">https://www.klh.at/wp-content/uploads/2019/12/fd0901-de.pdf</a>
			dataholz	<a href="https://www.dataholz.eu/bauteile/flachdach-flachgeneigtes-dach/variante/kz/fdmnko01.htm">https://www.dataholz.eu/bauteile/flachdach-flachgeneigtes-dach/variante/kz/fdmnko01.htm</a>
		DA 05 G		
		DA 05 FS		
		DA 05 UD		
		DA 05 UD2		

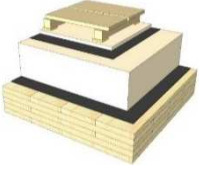
## Flachdach / Gehwegplatten

DA 06		DA 06 S	DT14.02	<a href="https://www.klh.at/wp-content/uploads/2019/12/dt1402-de.pdf">https://www.klh.at/wp-content/uploads/2019/12/dt1402-de.pdf</a>
		DA 06 G		
		DA 06 FS	DT14.01	<a href="https://www.klh.at/wp-content/uploads/2019/12/dt1401-de.pdf">https://www.klh.at/wp-content/uploads/2019/12/dt1401-de.pdf</a>
		DA 06 UD		
		DA 06 UD2		

# DA

## Flachdach / Holzterrasse

DA 07



DA 07 S	KLH intern	Messprotokoll WAA 2017 Dachterrasse
DA 07 G		
DA 07 FS		
DA 07 UD	dataholz	<a href="https://www.dataholz.eu/bauteile/flachdach-flachgeneigtes-dach/variante/kz/fdmnti01a/nr/1.htm">https://www.dataholz.eu/bauteile/flachdach-flachgeneigtes-dach/variante/kz/fdmnti01a/nr/1.htm</a>
DA 07 UD2	KLH intern	Messprotokoll WAA 2015 Dachterrasse